



TURKISH SOCIETY OF PHYSICAL MEDICINE AND REHABILITATION

E-ISSN: 2587-1250

TURKISH JOURNAL OF PHYSICAL MEDICINE AND REHABILITATION

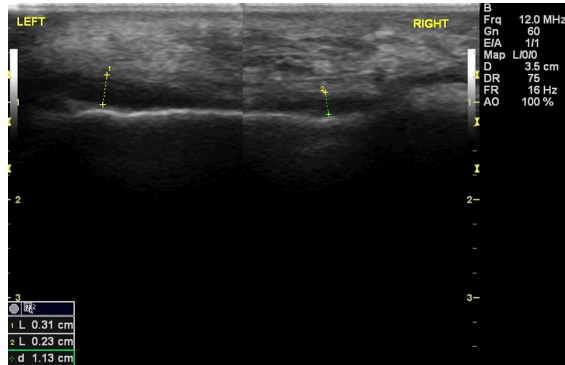
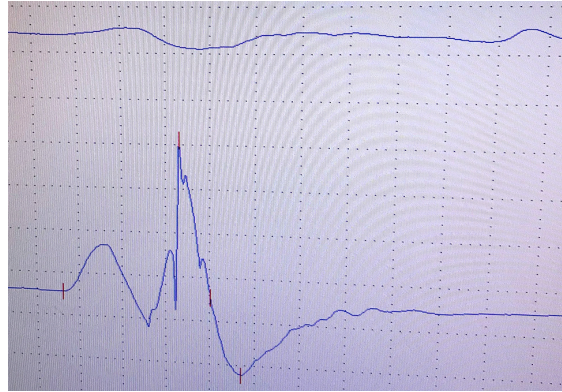
Formerly published as **Türkiye Fiziksel Tıp ve Rehabilitasyon Dergisi**

Editors

Birkan Sonel Tur
Deniz Evcik

Associate Editors

Ayşe Nur Bardak
Burcu Yanık
Coşkun Zateri
Duygu Geler Külcü
Şebnem Koldaş Doğan



Indexed in
SCI-E & PMC

Baycınar
Tıbbi Yayıncılık

VOLUME 67 • NUMBER 1 • MARCH 2021

www.turkishjournalpmr.com
www.ftrdergisi.com



TURKISH JOURNAL OF PHYSICAL MEDICINE AND REHABILITATION

Formerly published as **Türkiye Fiziksel Tıp ve Rehabilitasyon Dergisi**

Founders / Kurucular

Osman Cevdet Çubukçu
Derviş Manizade
Aziz Sevüktekin
Akif Şakir Şakar

Türkiye Fiziksel Tıp ve Rehabilitasyon Derneği
Adına Sahibi ve Sorumlu Yazı İşleri Müdürü
Kenan Akgün

Executive Office / Yönetim Yeri ve Adresi
Büyükdere Cad. Arzu Apt. No: 99, Kat: 4, D: 8-9,
34394 Mecidiyeköy, İstanbul, Türkiye.
Tel: +90 212 236 90 52
Fax: +90 212 236 90 54
URL: <http://www.turkishjournalpmr.com>
<http://www.ftrdergisi.com>

Editorial Contact Person / Editöryel İletişim
Birkan Sonel Tur
Deniz Evcik
e-mail / e-posta: info@turkishjournalpmr.com
info@ftrdergisi.com

Publisher / Yayıncı
Baycınar Tıbbi Yayıncılık
Örnek Mah. Dr. Suphi Ezgi Sok., No: 11, D: 6,
34704 Ataşehir, İstanbul, Türkiye
Tel: +90 216 317 41 14
Fax: +90 216 317 63 68
e-mail / e-posta: info@baycınartibbiyayincilik.com

Publishing date / Yayın tarihi
March 04, 2021 / 04 Mart 2021

Type of publication / Yayın Türü
Periodical / Yerel Süreli

Owner on Behalf of Turkish Society of Physical Medicine and Rehabilitation and Responsible Manager

Kenan Akgün
Istanbul University - Cerrahpaşa, İstanbul, Turkey

Editors

Birkan Sonel Tur
Ankara University, Ankara, Turkey

Deniz Evcik
Güven Hospital, Ankara, Turkey

Associate Editors

Ayşe Nur Bardak
University of Health Sciences, İstanbul, Turkey
Burcu Yanık
Çankaya Hospital, Ankara, Turkey
Coşkun Zateri
Çanakkale Onsekiz Mart University, Çanakkale, Turkey

Duygu Geler Külcü
University of Health Sciences, İstanbul, Turkey
Şebnem Koldaş Doğan
University of Health Sciences, Antalya, Turkey

Statistics Consultants

Afra Alkan
Yıldırım Beyazıt University, Ankara, Turkey
Arzu Baygöl
Koç University, İstanbul, Turkey
Atilla Halil Elhan
Ankara University, Ankara, Turkey
Can Ateş
Aksaray University, Aksaray, Turkey
Elif Çiğdem Altunok
Yeditepe University, İstanbul, Turkey

Halim İşsever
İstanbul University, İstanbul, Turkey
Nazan Alparslan
Çukurova University, Adana, Turkey
Pervin Demir
Yıldırım Beyazıt University, Ankara, Turkey
Selcen Yüksel
Yıldırım Beyazıt University, Ankara, Turkey
Timur Köse
Ege University, İzmir, Turkey

The Turkish Journal of Physical Medicine and Rehabilitation is indexed by Science Citation Index Expanded, PubMed Central, EMBASE, Scopus, CINAHL, Gale/Cengage Learning, EBSCO, Index Copernicus, DOAJ, TUBITAK ULAKBIM TR Index and Türkiye Citation Index.

All rights are reserved. Rights to the use and reproduction, including in the electronic media, of all communications, papers, photographs and illustrations appearing in this journal are the properties of the Turkish Journal of Physical Medicine and Rehabilitation, reproduction without prior written permission of part or all of and material is not permitted. The journal complies with the Professional Principles of the Press.

The control of conformity with the journal standards and the typesetting of the articles in this journal, the control of the abstracts and references and the preparation of the journal for publishing were conducted by Baycınar Medical Publishing.



National Scientific Advisory Board

Arzu On

Ege University, İzmir, Turkey

Aydan Oral

İstanbul University, İstanbul, Turkey

Ayşe Küçükdeveci

Ankara University, Ankara, Turkey

Ayşe Yalman

İstanbul University, İstanbul, Turkey

Ayşegül Ketenci

İstanbul University, İstanbul, Turkey

Banu Kuran

Yeni Yüzyıl University, İstanbul, Turkey

Canan Tıkız

Adnan Menderes University, Aydın, Turkey

Dilşad Sindel

İstanbul University, İstanbul, Turkey

Elif Akalın

Dokuz Eylül University, İzmir, Turkey

Erkan Kozanoğlu

Çukurova University, Adana, Turkey

Füsün Ardıç

Pamukkale University, Denizli, Turkey

Füsün Köseoğlu

TOBB ETU Hospital, Ankara, Turkey

Füsün Şahin

Private Clinic, Denizli, Turkey

Gülseren Akyüz

Marmara University, İstanbul, Turkey

Hatice Bodur

Yıldırım Beyazıt University, Ankara, Turkey

Haydar Gök

Ankara University, Ankara, Turkey

İlker Yağcı

Marmara University, İstanbul, Turkey

Jale İrdesel

Uludağ University, Bursa, Turkey

Kenan Akgün

İstanbul University, İstanbul, Turkey

Meltem Vural

University of Health Sciences, İstanbul, Turkey

Murat Zinnuroğlu

Gazi University, Ankara, Turkey

Mustafa Çalış

Erciyes University, Kayseri, Turkey

Müfit Akyüz

Karabük University, Karabük, Turkey

N. Kutay Ordu Gökkaya

University of Health Sciences, Ankara, Turkey

Nurdan Paker

University of Health Sciences, İstanbul, Turkey

Ömer Faruk Şendur

Adnan Menderes University, Aydın, Turkey

Özlen Peker

Dokuz Eylül University, İzmir, Turkey

Reengin Güzel

Çukurova University, Adana, Turkey

Resa Aydın

İstanbul University, İstanbul, Turkey

Safiye Tuncer

Ankara University, Ankara, Turkey

Saime Ay

Ufuk University, Ankara, Turkey

Sibel Eyiğör

Ege University, İzmir, Turkey

Sumru Özel

Hittit University, Çorum, Turkey

Tunç Alp Kalyon

Medicana Hospital, İstanbul, Turkey

Ülkü Zeynep Akarımak

İstanbul University, İstanbul, Turkey

Yeşim Kirazlı

Ege University, İzmir, Turkey

Zeynep Güven

Acibadem University, İstanbul, Turkey

International Scientific Advisory Board

Alessandro Giustini

Rehabilitation Unit, Ospedale Sanpancrazio
Santostefano Rehabilitation Group,
Arco, Trento, Italy

Amparo Martinez Assucena

Hospital of Requena, Valencia, Spain

Carl Chen

Chang Gung Memorial Hospital, Taipei, Taiwan

Chang-II Park

Konyang University, Daejeon, Korea

Elena Ilieva

Plovdiv Medical University,
Plovdiv, Bulgaria

Farooq Rathore

Bahria University, Karachi, Pakistan

Fary Khan

Monash University, Melbourne, Australia

Farzaneh Torkan

Shefa Research Center, Tehran, Iran

Francesca Gimigliano

University of Campania
"Luigi Vanvitelli", Caserta, Italy

Frederick Frost

Case Western Reserve University,
Cleveland, Ohio, USA

Fumihito Tajima

Wakayama Medical University, School of Medicine,
Wakayama, Japan

Gabor Fazekas

National Institute for Medical Rehabilitation,
Budapest, Hungary

Gordana Stefanovski

Institute of PRM "Dr M. Zotovic", Banja Luka,
Bosnia and Herzegovina

Helena Burger

University Rehabilitation Institute,
Ljubljana, Slovenia

Iuly Treger

Soroka Medical University,
Beer-Sheva, Israel

Jolanta Kujawa

Medical University of Lodz, Lodz, Poland

Jorge Lains

Rehabilitation Centre for the Central region of
Portugal, Rovisco Pais Hospital,
Tocha, Portugal

Juan Manuel Guzman

Clinica De Rehabilitacion,
Mexico City, Mexico

Khalil Al-Abbadi

Arab Center For Physical & Rehabilitation
Medicine, Amman, Jordan

Luh K Wahyuni

University of Indonesia, Jakarta, Indonesia

Lydia Abdul Latif

Malaysia University of Malaysia,
Kuala Lumpur, Malaysia

Mansoor Rayegani

Shahid Beheshti University,
Tehran, Iran

Mark A. Young

Maryland Rehabilitation Center,
Baltimore, Maryland, USA

Milica Lazovic

University of Belgrade, Belgrade, Serbia

Nachum Soroker

Tel-Aviv University, Tel Aviv, Israel

Peter Lim Ai Chi

Baylor College of Medicine,
Singapore - Houston, Texas, USA

Rajesh Pramanik

IPGMER & SSKM Hospital,
Kolkata, India

Simon F.T. Tang

Chang Gung University,
Taipei, Taiwan

Soumya Chatterjee

Case Western Reserve University,
Cleveland, Ohio, USA

Taslim Uddin

BSM Medical University,
Dhaka, Bangladesh

Zohra Ben Salah

University Hospital of Monastir,
Monastir, Tunisia



CONTENTS

INVITED REVIEW

- 1 **Pharmacological and non-pharmacological treatment approaches to chronic lumbar back pain**
Ayşegül Ketenci, Mert Zure

ORIGINAL ARTICLES

- 11 **Effect of ankle joint fixation on tibialis anterior muscle activity during split-belt treadmill walking in healthy subjects: A pilot study**
Etsuko Mori, Shigeo Tanabe, Yoichiro Aoyagi, Natsuki Yamakami, Masahiko Mukaino, Wataru Kikuchi, Tomoya Kato, Soichiro Koyama, Tomoko Kayukawa
- 17 **Effectiveness of training about kinesiotaping in myofascial pain syndrome: A prospective, single-blind, randomized-controlled study**
Banu Dilek, İbrahim Batmaz, Mustafa Akif Sarıyıldız, Ebru Şahin, Deniz Bulut, Elif Akalın, Remzi Çevik, Kemal Nas
- 25 **Orthostatic hypotension and age-related sarcopenia**
Kudret Keskin, Selda Çiftçi, Jülide Öncü, Güneş Melike Doğan, Gökhan Çetinkal, Süleyman Sezai Yıldız, Serhat Sığırıcı, Kadriye Orta Kılıçkesmez
- 32 **Are occlusal splints effective in reducing myofascial pain in patients with muscle-related temporomandibular disorders? A randomized-controlled trial**
Andrea Deregibus, Martina Ferrillo, Maria Grazia Piacino, Maria Chiara Domini, Alessandro de Sire, Tommaso Castorflorio
- 41 **The relationship between scoliosis and upper extremity functions in patients with Duchenne muscular dystrophy**
Nihan Erdiñç Gündüz, Filiz Meryem Sertpoyraz, Banu Dilek, Ebru Şahin, Figen Baydan, Bedile İrem Tiftikcioglu, Elif Keskin Pehlivan, Aylin Dikici, Yaşar Zorlu, Elif Akalın, Özlen Peker
- 48 **Incidence and demographic characteristics of Syrian Civil War-related amputations: A multi-center study**
Yaşar Tatar, Nilüfer Kablan, Mevlit Yurtseven
- 56 **Functional evaluation of patients with mastectomy lymphedema**
Yıldız Erdoğanoğlu, Meryem Çalık, Meltem Vural
- 62 **Inhibitory effects of biofeedback electrostimulation therapy on pain and cortisol levels in chronic neuropathic pain: A randomized-controlled trial**
Marzida Mansor, Zhi Shan Lee, Loh-Pui San, Mee Mei Ng, Naze Al-Abd, Mustafa Kassim
- 69 **The effects of vibration on efficiency in off-road cyclists**
Tolga Aksit, Arzu On, Gorkem Aybars Balci, Ozgur Ozkaya
- 77 **Effects of scapular stabilization exercises in patients of chronic neck pain with scapular dyskinesis: A quasi-experimental study**
Filiz Özdemir, Şeyma Toy, Fatma Kızılay, Zeynep Tuğçe Avcı, Zuhal Altay, Cemil Çolak
- 84 **Proximal muscle strength as a predictor of vitamin D insufficiency in elderly**
Ahmet Kocacı, Tunay Sarpel, Neslihan Gökçen, Sibel Başaran, İlke Coşkun Benliday
- 91 **The clinical effects of combining postural exercises with chest physiotherapy in cystic fibrosis: A single-blind, randomized-controlled trial**
Sabiha Güngör, Kardelen Gencer-Atalay, Yeliz Bahar-Özdemir, Özge Keniş-Coşkun, Evrim Karadağ-Saygı
- 99 **Comparing the efficacy of continuous and pulsed ultrasound therapies in patients with lateral epicondylitis: A double-blind, randomized, placebo-controlled study**
Hasan Hüseyin Ünver, Fulya Bakılan, Funda Berkan Taşcıoğlu, Onur Armağan, Merih Özgen

CASE REPORTS

- 107 **Oral motor dysfunction after carotid endarterectomy: Challenges in diagnosing marginal mandibular nerve injury and effectiveness of rehabilitation**
Seçilay Güneş, Birkan Sonel Tur
- 111 **Undifferentiated connective tissue disease presenting with optic neuritis and concomitant axial spondyloarthritis: A rare case report**
Başak Mansız-Kaplan, Barış Nacı, Cevriye Mülkoğlu, Seçil Pervane-Vural, Hakan Genç
- 115 **Role of rehabilitation in a COVID-19 survivor with intensive care unit-acquired weakness: A case report**
Firdevs Ulutaş, Sena S.N. Öztekin, Füsün Ardıç

LETTER TO THE EDITORS

- 120 **Ultrasound and electromyography & electrical stimulation-guided botulinum toxin injection of salivary glands for drooling: A case report with a description of the technique**
Esra Giray, Evrim Karadağ-Saygı, İlker Yağcı
- 122 **Generalized neutrophilic fixed drug eruption induced by gabapentin**
Emine Müge Acar, Serpil Çorum Şirin, Asuman Kilitci, Ömer Faruk Elmas, Funda Kemeriz, Ümran Günay
- 125 **Rectus femoris ossification accompanying with sacroiliac joint edema**
Sibel Süzen Özbayrak, Büşra Çiğdem, Mustafa Hüseyin Temel, Duygu Geler Külcü

Instructions for Authors

The Turkish Journal of Physical Medicine and Rehabilitation, formerly published as Türkiye Fiziksel Tıp ve Rehabilitasyon Dergisi, is the official publication of the Turkish Society of Physical Medicine and Rehabilitation which covers specific subjects on physical medicine and rehabilitation. The journal is published in association with the International Society of Physical and Rehabilitation Medicine (ISPRM). The journal is an international open-access, double-blind peer-reviewed periodical journal bringing the latest developments in physical medicine and rehabilitation. The journal publishes original articles, review articles, editorials, case reports (limited), letters to the editors. The language of the journal is English and it is published quarterly (in March, June, September, and December).

Manuscripts can only be submitted through the online manuscript submission and evaluation system of the journal, available at <http://www.turkishjournalpmr.com> or <http://www.ftrdergisi.com>. Manuscripts submitted via any other medium will not be evaluated.

The editorial and publication processes of the journal are conducted in accordance with the guidelines of the International Council of Medical Journal Editors (ICMJE), the World Association of Medical Editors (WAME), the Council of Science Editors (CSE), the Committee on Publication Ethics (COPE), the European Association of Science Editors (EASE), and National Information Standards Organization (NISO). The journal conforms to the Principles of Transparency and Best Practice in Scholarly Publishing (doaj.org/bestpractice).

An ORCID ID is required for all authors during the submission of the manuscript. The ID is available at <http://orcid.org> with free of charge.

Manuscripts submitted for the evaluation should not be previously presented or published elsewhere in any medium (paper or electronic). Editorial board should be informed of manuscripts which have been already submitted to another journal for the evaluation and rejected for publication. Manuscripts which have been presented in a meeting should be submitted with detailed information on the name, date, and venue of the organization. The originality of the content, high scientific merit and citation potential are the prime considerations of the editors.

Statements or opinions expressed in the published content only reflect the views of the author(s), but not the opinions of the editors. The Turkish Society of Physical Medicine and Rehabilitation, the Editorial Board, and the publisher disclaim any scientific, ethical or legal responsibility or liability for such materials. The author is solely responsible for the manuscript, Tables, Figures, and etc. which may elicit financial and legal responsibilities.

Upon the submission of the manuscript with the signed Copyright Transfer Agreement Form, the authors transfer all copyrights of their manuscripts within the scope of local and international laws to the journal. For this purpose, a copyright transfer form must be signed by all contributing authors and the original signed form must be posted to the Editorial office.

The Authorship Contribution Form must be filled by the corresponding author and a signed and scanned version must be submitted during the submission process to act appropriately to the authorship rights and prevent ghost or honorary authorship. The Authorship Contribution Form and the Printing Approval Form which are both released by the publisher must be submitted.

Conflict of Interest Statement

Any financial grants or other support received for the study from individuals or institutions must be disclosed to the Editorial Board and the International Committee of Medical Journal Editors (ICMJE) Potential Conflict of Interest Disclosure Form must be filled and submitted to disclose potential conflicts of interest.

The manuscripts must be prepared in accordance with ICMJE Recommendations for the Conduct, Reporting, Editing and Publication of Scholarly Work in Medical Journals (updated in December 2014 - <http://www.icmje.org/icmjerecommendations.pdf>). Authors are required to prepare manuscripts in accordance with the CONSORT guidelines for randomized research studies, the STROBE guidelines for the observational original research studies, the STARD guidelines for the diagnostic accuracy studies, the PRISMA guidelines for systematic reviews and meta-analyses,

the ARRIVE guidelines for the experimental animal studies, and the TREND guidelines for non-randomized public behaviors.

Ethical Considerations

An approval of research protocols by the Ethics Committee in accordance with international agreements (Helsinki Declaration, revised 2013, Guide for the Care and Use of Laboratory Animals - <https://www.nap.edu/catalog/5140.html/>) is required for experimental, clinical, and investigational drug studies, and some case reports. If required, the ethics committee reports or a corresponding official document may be requested from the authors. In manuscripts reporting the results of an experimental study, it must be stated within the main text that all patients were informed in detail on the treatments and that an informed consent was obtained from each patient. For studies carried out on animals, the measures taken to prevent pain and suffering of the animals must be explicitly stated. Information on the patient consent, name of the ethics committee, and the ethics committee approval number must also be stated in the Patients and Methods section of the manuscript. It is the author's responsibility to carefully protect the patients' anonymity. For photographs that may reveal the identity of the patient, signed releases of the patient or of his/her legal representative must be enclosed.

Plagiarism

Whether intentional or not, plagiarism is a serious violation. We define plagiarism as a case in which a paper reproduces another work with similarity and without citation. If evidence of plagiarism is found before/after acceptance or after publication of the paper, the author will be offered a chance for rebuttal. If the arguments are not found to be satisfactory, the manuscript will be retracted and the author sanctioned from publishing papers for a period to be determined by the responsible Editor(s). The journal uses iThenticate plagiarism screening tool to screen all submissions and to verify the originality of content before publication.

Review Process

Pre-evaluation process of each submission is carried out by the Editorial Board. Manuscripts are scanned for plagiarism or duplication. In case of an ethical issue on plagiarism or duplication, the Editorial Board will act in accordance with the Committee on Publication Ethics (COPE). The manuscripts which pass this stage are assigned to at least two double-blind peer-reviewers with a statistics reviewer. Reviewers are selected among independent experts who have published publications in the international literature on the submission subject and received considerable amount of citations. Research articles, systematic reviews, and meta-analyses are also reviewed by a biostatistician. By submitting a manuscript to the journal, authors accept that editor may implement changes on their manuscripts including misleading statements and mistypings, as long as the main idea of the manuscript is not interfered.

Manuscripts submitted to The Turkish Journal of Physical Medicine and Rehabilitation will go through a double-blind peer-review process. Each submission will be reviewed by at least two external, independent peer reviewers who are experts in their fields to ensure an unbiased evaluation process. The editorial board will invite an external and independent editor to manage the evaluation processes of manuscripts submitted by editors or by the editorial board members of the journal. The Editor-in-Chief is the final authority in the decision-making process for all submissions.

Once a manuscript is accepted for publication, the author list of the manuscript cannot be amended.

All manuscripts must be prepared using the Microsoft Office Word toolbox and must be structured in accordance with the principles mentioned below.

MANUSCRIPT TYPES

Original Article: The abstract should be structured with Objective, Patients and Methods (for human studies)/Materials and Methods (for experimental studies), Results, and Conclusion subheadings and should not be longer than 250 words. Keywords should be concordant with the National Library of Medicine (NLM) Medical Subject Headings (MeSH) vocabulary terms and three to six keywords should be listed. The main text should be structured with Introduction, Patients and Methods (for human studies)/Materials and Methods (for experimental studies), Results (with maximum three subheadings), and Discussion sections and should be limited to 3000 words. The reference list and tables should be located at

the end of the main document. All images should be submitted in .JPG and .TIFF formats in 300 Dpi resolutions. Number of cited references should be limited with 40. Tables and illustrations are limited with six.

Statistical analysis must be performed in accordance with the guidelines on reporting statistics in medical journals (Altman DG, Gore SM, Gardner MJ, Pocock SJ. Statistical Guidelines for Contributors To Medical Journals. *Br Med J* 1983;7:1489-93). The software used for the analysis should be explicitly stated. For parametric tests, continuous variables are expressed in mean \pm standard deviation, while for non-parametric tests, data are expressed in median and range (min-max) or median and interquartile range (25th and 75th percentiles). When complex analyses are used, the relative risk (RR), odds ratio (OR) and hazard ratio (HR) values are supported by providing confidence intervals (CI) and p values. Units should be prepared in accordance with the International System of Units (SI).

Editorial: These are short manuscripts which are prepared by the experts to comment on an article which is published in the current or previous issues of the journal. This type of manuscript is solicited. An Abstract, Keywords, Tables or Figures are not required for the Editorial Comments. The main text should not be structured with subheadings and should not be longer than 1500 words. Number of references should be limited to 15. Only one table or illustration is allowed.

Review: Reviews including systematic reviews and meta-analyses which are prepared by authors who have an extensive knowledge on a specific field and whose scientific background has been translated into a high volume of publication with a high citation potential are taken under review. The authors will be invited by the journal. Reviews should be describing, discussing and evaluating the current level of knowledge or topic used in the clinical practice and should guide further studies. The manuscript contains an unstructured abstract not exceeding 150 words.

The manuscript should include three to six keywords which conform to the MeSH terms prepared by the NLM. The main text should contain Introduction, Clinical and Research Consequences, and Conclusion sections. The main text should not exceed 4000 words and the references should be limited to 75. Tables and illustrations are limited with eight.

The originality of the visual media contained in the reviews should be confirmed by submitting a letter to the journal. The original versions of the printed or electronic copies of the images adapted from a published source should be explicitly cited and the written permission obtained from the copyright holder (publisher, journal or authors) should be forwarded to the journal.

Case Report: There is a limited space for case reports in the journal and only reports on rare cases or conditions which constitute challenges in the diagnosis and treatment, those offering novel therapeutic approaches or recent knowledge not included in the textbooks, and interesting and educative case reports are accepted for publication. The abstract should be unstructured and should not exceed 80 to 100 words. The manuscript should include three to six keywords which conform to the MeSH terms prepared by the NLM. The main text should include Introduction, Case Report, Discussion, and Conclusion sections. Figures and images should be submitted separately in JPEG or TIFF formats in 300 Dpi resolutions. The main text should be limited to 1500 words. References should be limited to 15. Each case report should include an informed consent from each patient which is explicitly stated in the Case Report section. Tables and illustrations are limited with three in black and white format. Colored illustrations will be paid, if requested.

Letter to the Editor: Includes manuscripts discussing important parts, overlooked aspects, or lacking parts of a previously published article. Papers on the subjects within the scope of the journal which may likely to attract the readers' attention, in particular, educative cases are also allowed to be submitted in the form of Letter to the Editor. Readers are also allowed to present their comments on the published manuscripts in the form of Letter to the Editor. Tables, Figures, Images, and other media are not included. The text should be unstructured and should not exceed 500 words with one to five references. Volume, year, issue, page numbers, and title of the manuscript being commented on, as well as the name of the authors should be explicitly specified, should be listed in the references, and cited within the text. Only one table or illustration is allowed.

Tables and Figures

Submitted manuscript files should be blind to ensure a double-blind review process. Information which may indicate an individual or institution should be excluded from the manuscript files.

All Tables, Figures, Graphs, and other visual media should be numbered in the order of citation within the text and must not disclose the names of the patients, doctors or institutions. Tables should be prepared using the Microsoft Office Word toolbox with Insert Table command and be placed at the end of the References section of the main text. Tables should not be submitted in JPEG, TIFF or other visual formats. In microscopic images, magnification and staining techniques should be specified in addition to the figure captions. All images should be in high-resolution with minimum 300 Dpi resolutions. Lines in the graphs should be in separate columns. Therefore, loss of details would be minimal, if reduction is needed during press. The width should be 9 cm or 18 cm. Preferably, the drawings should be prepared by the professionals. Abbreviations used in tables should be defined in alphabetical order at the bottom of the tables. Roman numerals should be avoided while numbering the Tables and Figures, or while citing the tables in the text. Decimal points in the text, tables and figures, should be separated by dots (p=0.05) and comma (1,000) for at least four digit numbers. Particularly, tables should be explanatory for the text and should not duplicate the data given in the text.

When a drug, product, hardware, or software program is mentioned within the main text, product information, including the name of the product, the producer of the product, and city and the country of the company (including the state if in USA), should be provided in parentheses in the following format: Discovery ST PET/CT scanner (General Electric, Milwaukee, WI, USA).

References

References should be numbered in the order they are cited. Only published data or manuscripts accepted for publication and recent data should be included. Inaccessible data sources and those not indexed in any database should be omitted. Titles of journals should be abbreviated in accordance with Index Medicus-NLM Style (Patrias K. Citing medicine: the NLM style guide for authors, editors, and publishers [Internet]. 2nd ed. Wendling DL, technical editor. Bethesda (MD): National Library of Medicine (US); 2007 - [updated 2011 Sep 15; cited Year Month Day] (<http://www.nlm.nih.gov/citingmedicine>). All authors should be listed if an article has six or less authors; if an article has more than six authors, first six authors are listed and the rest is represented by "et al.". Reference format and punctuation should be as in the following examples:

- If the surname of the first author of the referenced article is given, "et al." should be added after it, followed by its reference number within square brackets "[1]"
- Give references in the text using Arabic numerals in brackets "[1]" (superscript preferred).
- If more than one references are required in the main manuscript, references should be stated in a superscript square bracket with a comma at the end of the punctuation mark of the related sentence. [1,2,5]
- If there are more than two consecutive references, the first and the last ones should be given with "-" mark between them: e.g. [1-3]; [8-14]; [14-18].

Abbreviations of journals should conform to those used in Index Medicus. Authors are solely responsible for the accuracy and completeness of references.

Journal: Ehde DM, Czerniecki JM, Smith DG, Campbell KM, Edwards WT, Jensen MP, et al. Chronic phantom sensations, phantom pain, residual limb pain, and other regional pain after lower limb amputation. *Arch Phys Med Rehabil* 2000;81:1039-44.

Book Section: Eftekhari N. Amputation rehabilitation. In: O'Young B, Young MA, Stiens SA, editors. *PMR Secrets*. Philadelphia: Hanley&Belfus Inc.; 1999. p. 214-22.

Books with Single Author: Mulligan BR. *Manual Therapy: Nags, Snags, MWMs*, etc. 6th ed. Wellington: Bateson Publishing Ltd; 2010.

Editor(s) as author(s): O'Sullivan SB, Schmitz TJ, editors. *Improving functional outcomes in physical rehabilitation*. 1st ed. Pennsylvania: F.A. Davis Company; 2010.

Conference Proceedings: Bengtsson S, Sotheman BG. Enforcement of data protection, privacy and security in medical informatics. In: Lun KC, Degoulet P, Piemme TE, Rienhoff O, editors. *MEDINFO 92*. Proceedings of the 7th World Congress on Medical Informatics; 1992 Sept 6-10; Geneva, Switzerland. Amsterdam: North-Holland; 1992. p. 1561-5.



TURKISH SOCIETY OF PHYSICAL MEDICINE AND REHABILITATION

Turkish Journal of Physical Medicine and Rehabilitation

Formerly published as TÜRKİYE FİZİKSEL TIP VE REHABİLİTASYON DERGİSİ

Scientific or Technical Report: Smith P, Golladay K. Payment for durable medical equipment billed during skilled nursing facility stays. Final report. Dallas (TX) Dept. of Health and Human Services (US). Office of Evaluation and Inspections: 1994 Oct. Report No: HHSIGOE 169200860.

Thesis: Kaplan SI. Post-hospital home health care: the elderly access and utilization (dissertation). St. Louis (MO): Washington Univ.; 1995.

Epub Ahead of Print Articles: Baki ME, Aldemir C, Duygun F, Doğan A, Kerimoğlu G. Comparison of non-compression and compression interlocking intramedullary nailing in rabbit femoral shaft osteotomy model. Eklem Hastalık Cerrahisi 2017;28:7-12.

Manuscripts published in electronic format: Teasell R, Bhogal SK, Foley N. Painful hemiplegic shoulder. Evidence-Based Review of stroke rehabilitation. 2006. Available from: [http://www.scribd.com/doc/6281057/](http://www.scribd.com/doc/6281057/Evidence-Based-Review-of-Stroke-Rehab) Evidence-Based-Review-of-Stroke-Rehab.

REVISIONS

When submitting a revised version of a paper, the author must submit a detailed "Response to the reviewers" that states point by point how each issue raised by the reviewers has been covered and where it can be found (each reviewer's comment, followed by the author's reply and line numbers where the changes have been made) as well as an annotated copy of the main document. Revised manuscripts must be submitted within 30 days from the date of the decision letter. If the revised version of the manuscript is not submitted within the

allocated time, the revision option may be canceled. If the submitting author(s) believe that additional time is required, they should request this extension before the initial 30-day period is over.

Accepted manuscripts are copy-edited for grammar, punctuation, and format. Once the publication process of a manuscript is completed, it is published online on the journal's webpage as an ahead-of-print publication before it is included in its scheduled issue. A PDF proof of the accepted manuscript is sent to the corresponding author and their publication approval is requested within 2 days of their receipt of the proof.

The latest status of the submitted manuscripts and other information about the journal can be accessed at <http://www.turkishjournalpmr.com>. Furthermore, contact details of the Editorial Office and Publisher are provided below for correspondence with the journal in every respect.

Editors: Prof. Birkan Sonel Tur, MD., Prof. Deniz Evcik, MD.

Corresponding: Türkiye Fiziksel Tıp ve Rehabilitasyon Derneği
Büyükdere Cad. Arzu Apt. No: 99, Kat: 4, D: 8-9,
34394 Mecidiyeköy, İstanbul, Turkey.

Tel: +90 212 - 236 90 52 Fax: +90 212 - 236 90 54

E-mail : info@turkishjournalpmr.com
info@ftrdergisi.com

Web page : <http://www.turkishjournalpmr.com>
<http://www.ftrdergisi.com>



TURKISH SOCIETY OF PHYSICAL MEDICINE AND REHABILITATION

Turkish Journal of Physical Medicine and Rehabilitation

Formerly published as TÜRKİYE FİZİKSEL TIP VE REHABİLİTASYON DERGİSİ

Dear colleague,

We would like to inform you that Turkish Journal of Physical Medicine and Rehabilitation (official journal of Turkish Society of Physical Medicine and Rehabilitation) will be published as e-journal starting from March 2021 considering both the increasing trend of the e journals worldwide and the economic advantages.

Editors

Prof. Birkan SONEL TUR, MD - Prof. Deniz EVCİK, MD



We would like to express our gratitude to our distinguished advisors who contribute to the Journal in 2020

Afitap İçağasıoğlu	Elif Çiğdem Altunok	Murat Ersöz
Afra Alkan	Elif Gurkan	Murat Hancı
Ahmet Özgül	Emre Ata	Murat Zinnuroğlu
Ajda Bal	Erkan Kozanoğlu	N. Kutay Ordu Gökkaya
Ali Biçer	Erkan Mesci	Nalan Çapan
Ali Murat Zergeroğlu	Evrin Karadağ Saygı	Nesrin Demirsoy
Ali Yavuz Karahan	Fatma Nişancı	Nihal Ozaras
Aliye Yıldırım Güzelant	Fatmanur Aybala Koçak	Nilgün Mesci
Altuğ Tanrıöver	Feray Soyupek	Nilüfer Kutay Ordu Gökkaya
Arzu Baygöl	Feyza Begeoğlu	Nur Kesiktaş
Arzu On	Feyza Ünlü Özkan	Nuray Akkaya
Atilla Halil Elhan	Figen Yılmaz	Nurdan Paker
Aydan Oral	Filiz Eser	Nurettin Taştekin
Ayhan Kamanlı	Filiz Tuna	Ömer Faruk Şendur
Ayşe A. Küçükdeveci	Funda Atamaz Çalış	Oya Özdemir
Ayşe Dicle Turhanoğlu	Funda Taşçıoğlu Berkan	Özden Özyemişi Taşkiran
Ayşe Nur Bardak	Füsun Ardiç	Pervin Demir
Ayşe Yalman	Füsun Köseoğlu	Pınar Akpınar
Ayşegül Ketenci	Füsun Şahin	Pınar Borman
Aysun Genç	Füsun Uysal	Remzi Çevik
Banu Kuran	Gabor Fazekas	Rengin Güzel
Banu Sarıfakıoğlu	Gamze Alaylı	Saime Ay
Barın Selçuk	Gül Erkin Ozaygen	Şebnem Koldaş Doğan
Belgin Erhan	Gülcan Gürer	Seçilay Günes
Beril Doğu	Gülin Fındıkoğlu	Selcen Yüksel
Berna Çelik	Gülseren Akyüz	Selda Sarıkaya
Berrin Durmaz	Hakan Genç	Şenay Öz dolap
Bilge Ekinci	Hakan Gündüz	Serdar Kesikburun
Bilge Yılmaz	Hale Karapolat	Seyd Mansoor Rayegani
Birkan Sonel Tur	Halim İşsever	Sibel Eyiğör
Burcu Duyur Çakıt	Hatice Bodur	Sibel Ünsal Delialioğlu
Burcu Önder	Haydar Gök	Simin Hepgüler
Burcu Yanık	Hürriyet Yılmaz	Sumru Özel
Can Ateş	Hüseyin Demir	Tansu Arasil
Canan Çelik	İlhan Karacan	Timur Köse
Canan Tıkız	İlker Yağcı	Toraman Füsün
Cem Erçalık	İlknur Aktaş	Tuba Ümit Gafuroğlu
Çiğdem Bircan	Iuly Tregger	Tunç Alp Kalyon
Çiğdem Genç	Jale İrdesel	Turgay Altınbilek
Coşkun Zateri	Jülide Öncü Alptekin	Yaşar Tatar
Demet Oflluoğlu	Kaan Uzunca	Yasemin Ulus
Demirhan Dıraçoğlu	Kamil Yazıcıoğlu	Yasemin Yumuşakhuylu
Deniz Dülgeroğlu Erdoğdu	Kazım Çapacı	Yasin Demir
Deniz Evcik	Kemal Türker	Yeşim Akkoç
Deniz Palamar	kerem Alptekin	Yeşim Akyol
Derya Demirbağ Kabayel	Koray Aydemir	Z. Nazan Alparslan
Derya Soy Buğdaycı	Levent Özçakar	Zafer Günendi
Dilek Durmuş	Mehmet Ali Taşkaynatan	Zeynep Akarırmak
Dilek Keskin	Melek Güneş Yavuzer	Zeynep Rezan Yorgancıoğlu
Dilşad Sindel	Melek Sezgin	
Duygu Geler Külcü	Melih Bozkurt	
Ebru Şahin	Meliha Kasapoğlu Aksoy	
Ebru Umay	Meltem Vural	
Ebru Yılmaz Yalçinkaya	Meral Bilgisoy Filiz	
Elif Aydın	Müfit Akyüz	