



TURKISH SOCIETY OF PHYSICAL MEDICINE AND REHABILITATION

P-ISSN: 2587-0823 • E-ISSN: 2587-1250

# TURKISH JOURNAL OF PHYSICAL MEDICINE AND REHABILITATION

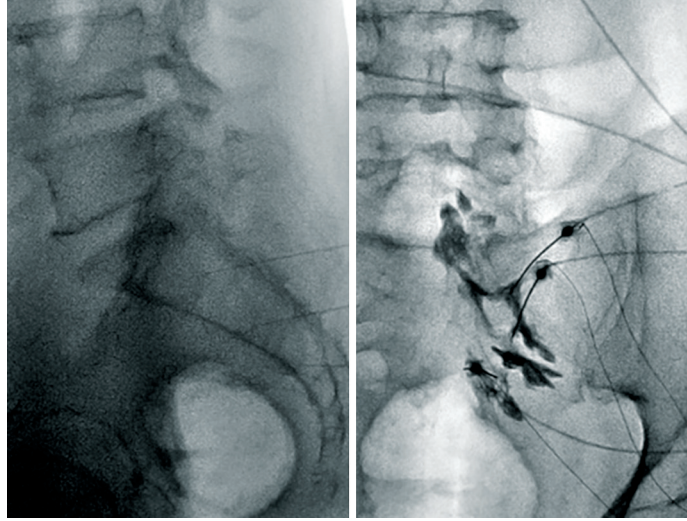
Formerly published as **Türkiye Fiziksel Tıp ve Rehabilitasyon Dergisi**

## **Editors**

Birkan Sonel Tur  
Deniz Evcik

## **Associate Editors**

Ayşe Nur Bardak  
Burcu Yanık  
Duygu Geler Külcü  
Şebnem Koldaş Doğan



Indexed in Science  
Citation Index-Expanded  
&  
PubMed Central

**Bayçınar**  
Tıbbi Yayıncılık

VOLUME 65 • NUMBER 4 • DECEMBER 2019

[www.turkishjournalpmr.com](http://www.turkishjournalpmr.com)  
[www.ftrdergisi.com](http://www.ftrdergisi.com)



TURKISH SOCIETY OF PHYSICAL MEDICINE AND REHABILITATION

P-ISSN: 2587-0823 • E-ISSN: 2587-1250

# TURKISH JOURNAL OF PHYSICAL MEDICINE AND REHABILITATION

Formerly published as **Türkiye Fiziksel Tıp ve Rehabilitasyon Dergisi**

## Founders / Kurucular

Osman Cevdet Çubukçu  
Derviş Manizade  
Aziz Seviçtekin  
Akif Şakir Şakar

Türkiye Fiziksel Tıp ve Rehabilitasyon Derneği  
Adına Sahibi ve Sorumlu Yazı İşleri Müdürü  
Ayşegül Ketenci

**Executive Office / Yönetim Yeri ve Adresi**  
Büyükdere Cad. Arzu Apt. No: 99, Kat: 4, D: 8-9,  
34394 Mecidiyeköy, İstanbul, Türkiye.  
Tel: +90 212 236 90 52  
Fax: +90 212 236 90 54  
URL: <http://www.turkishjournalpmr.com>  
<http://www.ftrdergisi.com>

**Editorial Contact Person / Editöryal İletişim**  
Birkan Sonel Tur  
Deniz Evcik  
e-mail / e-posta: [info@turkishjournalpmr.com](mailto:info@turkishjournalpmr.com)  
[info@ftrdergisi.com](mailto:info@ftrdergisi.com)

**Publisher / Yayıncı**  
Baycınar Tıbbi Yayıncılık  
Örnek Mah. Dr. Suphi Ezgi Sok., No: 11, D: 6,  
34704 Ataşehir, İstanbul, Türkiye  
Tel: +90 216 317 41 14  
Fax: +90 216 317 63 68  
e-mail / e-posta: [info@baycınartibbiyayincilik.com](mailto:info@baycınartibbiyayincilik.com)

**Press / Baskı**  
Ege Reklam Basım Sanatları San.Tic. Ltd. Şti.  
Esatpaşa Mah. Ziyapaşa Cad. No: 4,  
34704 Ataşehir, İstanbul, Türkiye  
Tel: +90 216 470 44 70  
Fax: +90 216 472 84 05  
URL: <http://www.egebasim.com.tr>  
Matbaa Sertifikası No: 45604

**Press date / Basım tarihi**  
December 05, 2019 / 05 Aralık 2019  
**Circulation / Baskı adedi:** 450

**Type of publication / Yayın Türü**  
Periodical / Yıllık Süreli

## Owner on Behalf of Turkish Society of Physical Medicine and Rehabilitation and Responsible Manager

Ayşegül Ketenci  
İstanbul University, İstanbul, Turkey

## Editors

Birkan Sonel Tur  
Ankara University, Ankara, Turkey

Deniz Evcik  
Güven Hospital, Ankara, Turkey

## Associate Editors

Ayşe Nur Bardak  
University of Health Sciences, İstanbul, Turkey  
Burcu Yanık  
Çankaya Hospital, Ankara, Turkey

Duygu Geler Külcü  
University of Health Sciences, İstanbul, Turkey  
Şebnem Koldaş Doğan  
University of Health Sciences, Antalya, Turkey

## Statistics Consultants

Afra Alkan  
Yıldırım Beyazıt University, Ankara, Turkey  
Atilla Halil Elhan  
Ankara University, Ankara, Turkey  
Elif Çiğdem Altunok  
Yeditepe University, İstanbul, Turkey  
Halim İşsever  
İstanbul University, İstanbul, Turkey

Pervin Demir  
Yıldırım Beyazıt University, Ankara, Turkey  
Selcen Yüksel  
Yıldırım Beyazıt University, Ankara, Turkey  
Timur Köse  
Ege University, İzmir, Turkey

The Turkish Journal of Physical Medicine and Rehabilitation is indexed by Science Citation Index Expanded, PubMed Central, EMBASE, Scopus, CINAHL, Gale/Cengage Learning, EBSCO, Index Copernicus, DOAJ, TUBITAK ULAKBIM TR Index and Türkiye Citation Index.

All rights are reserved. Rights to the use and reproduction, including in the electronic media, of all communications, papers, photographs and illustrations appearing in this journal are the properties of the Turkish Journal of Physical Medicine and Rehabilitation, reproduction without prior written permission of part or all of and material is not permitted. The journal compiles with the Professional Principles of the Press.



This publication is printed on paper that meets the international standard ISO 9706: 1994  
National Library of Medicine encourages the use of permanent, acid-free paper in the production of biomedical literature.

The control of conformity with the journal standards and the typesetting of the articles in this journal, the control of the abstracts and references and the preparation of the journal for publishing were conducted by Baycınar Medical Publishing.



## National Scientific Advisory Board

### Arzu On

Ege University, İzmir, Turkey

### Aydan Oral

İstanbul University, İstanbul, Turkey

### Ayşe Küçükdeveci

Ankara University, Ankara, Turkey

### Ayşe Yalman

İstanbul University, İstanbul, Turkey

### Ayşegül Ketenci

İstanbul University, İstanbul, Turkey

### Banu Kuran

Yeni Yüzyıl University, İstanbul, Turkey

### Canan Tıkız

Adnan Menderes University, Aydın, Turkey

### Dilşad Sindel

İstanbul University, İstanbul, Turkey

### Elif Akalın

Dokuz Eylül University, İzmir, Turkey

### Erkan Kozanoğlu

Çukurova University, Adana, Turkey

### Füsun Ardiç

Pamukkale University, Denizli, Turkey

### Füsun Köseoğlu

TOBB ETU Hospital, Ankara, Turkey

### Füsun Şahin

Pamukkale University, Denizli, Turkey

### Gülseren Akyüz

Marmara University, İstanbul, Turkey

### Hakan Tuna

Trakya University, Edirne, Turkey

### Hatice Bodur

Yıldırım Beyazıt University, Ankara, Turkey

### Haydar Gök

Ankara University, Ankara, Turkey

### İlker Yağcı

Marmara University, İstanbul, Turkey

### Jale İrdesel

Uludağ University, Bursa, Turkey

### Kenan Akgün

İstanbul University, İstanbul, Turkey

### Meltem Vural

University of Health Sciences, İstanbul, Turkey

### Murat Zinnuroğlu

Gazi University, Ankara, Turkey

### Mustafa Çalış

Erciyes University, Kayseri, Turkey

### Müfit Akyüz

Karabük University, Karabük, Turkey

### N. Kutay Ordu Gökkaya

University of Health Sciences, Ankara, Turkey

### Nurdan Pakar

University of Health Sciences, İstanbul, Turkey

### Ömer Faruk Şendur

Adnan Menderes University, Aydın, Turkey

### Özlen Peker

Dokuz Eylül University, İzmir, Turkey

### Rengin Güzel

Çukurova University, Adana, Turkey

### Resa Aydın

İstanbul University, İstanbul, Turkey

### Safiye Tuncer

Ankara University, Ankara, Turkey

### Saime Ay

Ufuk University, Ankara, Turkey

### Sibel Eyigör

Ege University, İzmir, Turkey

### Sumru Özel

Hitit University, Çorum, Turkey

### Tunç Alp Kalyon

Medicana Hospital, İstanbul, Turkey

### Ülkü Zeynep Akarırnak

İstanbul University, İstanbul, Turkey

### Yeşim Kirazlı

Ege University, İzmir, Turkey

### Zeynep Güven

Acibadem University, İstanbul, Turkey

## International Scientific Advisory Board

### Alessandro Giustini

Rehabilitation Unit, Ospedale Sanpancrazio  
Santostefano Rehabilitation Group,  
Arco, Trento, Italy

### Amparo Martinez Assucena

Hospital of Requena, Valencia, Spain

### Carl Chen

Chang Gung Memorial Hospital,  
Taipei, Taiwan

### Chang-II Park

Konyang University, Daejeon, Korea

### Elena Ilieva

Plodiv Medical University,  
Plodiv, Bulgaria

### Farooq Rathore

Bahria University, Karachi, Pakistan

### Fary Khan

Monash University, Melbourne, Australia

### Farzaneh Torkan

Shefa Research Center, Tehran, Iran

### Francesca Gimigliano

University of Campania  
"Luigi Vanvitelli", Caserta, Italy

### Frederick Frost

Case Western Reserve University,  
Cleveland, Ohio, USA

### Gabor Fazekas

National Institute for Medical Rehabilitation,  
Budapest, Hungary

### Gordana Stefanovski

Institute of PRM "Dr M. Zotovic", Banja Luka,  
Bosnia and Herzegovina

### Helena Burger

University Rehabilitation Institute,  
Ljubljana, Slovenia

### Iuly Treger

Soroka Medical University,  
Beer-Sheva, Israel

### Jolanta Kujawa

Medical University of Lodz, Lodz, Poland

### Jorge Lains

Rehabilitation Centre for the Central region of  
Portugal, Rovisco Pais Hospital,  
Tocha, Portugal

### Juan Manuel Guzman

Clinica De Rehabilitacion,  
Mexico City, Mexico

### Khalil Al-Abbadi

Arab Center For Physical & Rehabilitation  
Medicine, Amman, Jordan

### Luh K Wahyuni

University of Indonesia, Jakarta, Indonesia

### Lydia Abdul Latif

Malaysia University of Malaysia,  
Kuala Lumpur, Malaysia

### Mansoor Rayegani

Shahid Beheshti University, Tehran, Iran

### Mark A. Young

Maryland Rehabilitation Center,  
Baltimore, Maryland, USA

### Milica Lazovic

University of Belgrade, Belgrade, Serbia

### Nachum Soroker

Tel-Aviv University, Tel Aviv, Israel

### Peter Lim Ai Chi

Baylor College of Medicine,  
Singapore - Houston, Texas, USA

### Rajesh Pramanik

IPGMR & SSKM Hospital, Koklata, India

### Simon F.T. Tang

Chang Gung University, Taipei, Taiwan

### Soumya Chatterjee

Case Western Reserve University,  
Cleveland, Ohio, USA

### Taslim Uddin

BSM Medical University, Dhaka, Bangladesh

### Zohra Ben Salah

University Hospital of Monastir, Monastir, Tunisia



## CONTENTS

### EDITORIAL

- 299 **Turkish Journal of Physical Medicine and Rehabilitation is now the host of the Cochrane Rehabilitation Corners**  
Deniz Evcik, Birkan Sonel Tur, Ayşegül Ketenci

### ORIGINAL ARTICLES

- 301 **The relationship of illness perceptions with demographic features, pain severity, functional capacity, disability, depression, and quality of life in patients with chronic low back pain**  
Özge Ünal, Yeşim Akyol, Berna Tander, Yasemin Ulus, Yüksel Terzi, Ömer Kuru
- 309 **The addition of self-lymphatic drainage to compression therapy instead of manual lymphatic drainage in the first phase of complex decongestive therapy for treatment of breast cancer-related lymphedema: A randomized-controlled, prospective study**  
Zeynep Tuba Bahtiyar, Aslı Can, Emel Ekşioğlu, Aytül Çakıcı
- 318 **Functional outcomes after flexor tendon repair of the hand**  
Taryn Spark, Lonwabo Godlwana, Veronica Ntsiea, Eileen Du Plooy, Charl Janse van Rensburg
- 327 **Does kinesiotaping affect standing balance in healthy individuals? A pilot, double-blind, randomized-controlled study**  
Haydar Gök, Merve Örcü Atar, Can Ateş, Birkan Sonel Tur
- 335 **The course of post-stroke bladder problems and their relation with functional and mental status and quality of life: A six-month, prospective, multicenter study**  
Yeşim Akkoç, Necmettin Yıldız, Ayşe Nur Bardak, Murat Ersöz, Hakan Tunç, Kurtuluş Köklü, Ebru Alemdaroğlu, Ayşe Güler, Ezgi Şaşmaz, Asuman Doğan, Zuhâl Özişler, Engin Koyuncu
- 343 **What are the risk factors of poor medication adherence in the target-to-treat era?**  
Aslı Çalışkan Uçkun, Fatma Gül Yurdakul, Hatice Bodur
- 352 **The effect of magnetic field therapy and electric stimulation on experimental burn healing**  
Yaşar Keskin, Nurettin Taştekin, Mehmet Kanter, Hüsamettin Top, Ferda Özdemir, Mustafa Erboğa, Özgür Taşpınar, Necdet Süt
- 361 **Comparison of the effectiveness of partial body weight-supported treadmill exercises, robotic-assisted treadmill exercises, and anti-gravity treadmill exercises in spastic cerebral palsy**  
Berke Aras, Evren Yaşar, Serdar Kesikburun, Duygu Türker, Fatih Tok, Bilge Yılmaz
- 371 **Effect of virtual reality therapy on functional development in children with cerebral palsy: A single-blind, prospective, randomized-controlled study**  
Burcu Metin Ökmen, Meryem Doğan Aslan, Güldal Funda Nakipoğlu Yüzer, Neşe Özgirgin
- 379 **Early improvement in physical activity and function after total hip arthroplasty: Predictors of outcomes**  
Tuba Güler, Filiz Sivas, Fatma Gül Yurdakul, Ersin Çelen, Ali Utkan, Bedriye Başkan, Hatice Bodur, Bülent Özkurt
- 389 **The relationship of serum vitamin D receptor levels with disease activity and clinical parameters in patients with ankylosing spondylitis**  
Turgut Kültür, Dilek Öztaş, Dilek Keskin, Gökşal Keskin, Ali İnal, Halil Kara
- 394 **The effectiveness of prolotherapy on failed rotator cuff repair surgery**  
Serkan Akpancar, Aydan Örsçelik, Mehmet Murat Seven, Kenan Koca

### COCHRANE CORNER

- 402 **Are person- and work-directed interventions effective for enhancing return-to-work in patients with coronary heart disease? A Cochrane Review summary with commentary**  
Aydan Oral, Dilşad Sindel

### CASE REPORTS

- 406 **Use of fluoroscopic-guided transsacral block for the treatment of iatrogenic post-injection sciatic neuropathy: Report of three cases**  
Savaş Şencan, İsa Cüce, Osman Hakan Gündüz
- 411 **Bilateral pan-plexus lesion after substance use: A case report**  
Dilek Eker Büyüksireci, Musa Polat, Murat Zinnuroğlu, Bülent Cengiz, Gülçin Kaymak Karataş

### LETTER TO THE EDITOR

- 415 **The importance of evaluating patients with cauda equina syndrome for predicting prognosis**  
Seçilay Güneş, Birkan Sonel Tur

- 417 **Index**

## Instructions for Authors

The Turkish Journal of Physical Medicine and Rehabilitation, formerly published as Türkiye Fiziksel Tıp ve Rehabilitasyon Dergisi, is the official publication of the Turkish Society of Physical Medicine and Rehabilitation which covers specific subjects on physical medicine and rehabilitation. The journal is an international open-access, double-blind peer-reviewed periodical journal bringing the latest developments in physical medicine and rehabilitation. The journal publishes original articles, review articles, editorials, case reports (limited), letters to the editors. The language of the journal is English and it is published quarterly (in March, June, September, and December).

Manuscripts can only be submitted through the online manuscript submission and evaluation system of the journal, available at <http://www.turkishjournalpmr.com> or <http://www.ftrdergisi.com>. Manuscripts submitted via any other medium will not be evaluated.

The editorial and publication processes of the journal are conducted in accordance with the guidelines of the International Council of Medical Journal Editors (ICMJE), the World Association of Medical Editors (WAME), the Council of Science Editors (CSE), the Committee on Publication Ethics (COPE), the European Association of Science Editors (EASE), and National Information Standards Organization (NISO). The journal conforms to the Principles of Transparency and Best Practice in Scholarly Publishing ([doaj.org/bestpractice](http://doaj.org/bestpractice)).

An ORCID ID is required for all authors during the submission of the manuscript. The ID is available at <http://orcid.org> with free of charge.

Manuscripts submitted for the evaluation should not be previously presented or published elsewhere in any medium (paper or electronic). Editorial board should be informed of manuscripts which have been already submitted to another journal for the evaluation and rejected for publication. Manuscripts which have been presented in a meeting should be submitted with detailed information on the name, date, and venue of the organization. The originality of the content, high scientific merit and citation potential are the prime considerations of the editors.

Statements or opinions expressed in the published content only reflect the views of the author(s), but not the opinions of the editors. The Turkish Society of Physical Medicine and Rehabilitation, the Editorial Board, and the publisher disclaim any scientific, ethical or legal responsibility or liability for such materials. The author is solely responsible for the manuscript, Tables, Figures, and etc. which may elicit financial and legal responsibilities.

Upon the submission of the manuscript with the signed Copyright Transfer Agreement Form, the authors transfer all copyrights of their manuscripts within the scope of local and international laws to the journal. For this purpose, a copyright transfer form must be signed by all contributing authors and the original signed form must be posted to the Editorial office.

The Authorship Contribution Form must be filled by the corresponding author and a signed and scanned version must be submitted during the submission process to act appropriately to the authorship rights and prevent ghost or honorary authorship. The Authorship Contribution Form and the Printing Approval Form which are both released by the publisher must be submitted.

### Conflict of Interest Statement

Any financial grants or other support received for the study from individuals or institutions must be disclosed to the Editorial Board and the International Committee of Medical Journal Editors (ICMJE) Potential Conflict of Interest Disclosure Form must be filled and submitted to disclose potential conflicts of interest.

The manuscripts must be prepared in accordance with ICMJE Recommendations for the Conduct, Reporting, Editing and Publication of Scholarly Work in Medical Journals (updated in December 2014 - <http://www.icmje.org/icmjerecommendations.pdf>). Authors are required to prepare manuscripts in accordance with the CONSORT guidelines for randomized research studies, the STROBE guidelines for the observational original research studies, the STARD guidelines for the diagnostic accuracy studies, the PRISMA guidelines for systematic reviews and meta-analyses, the ARRIVE guidelines for the experimental animal studies, and the TREND guidelines for non-randomized public behaviors.

### Ethical Considerations

An approval of research protocols by the Ethics Committee in accordance with international agreements (Helsinki Declaration, revised 2013, Guide for the Care and Use of Laboratory Animals - <https://www.nap.edu/catalog/5140.html/>) is required for experimental, clinical, and investigational drug studies, and some case reports. If required, the ethics committee reports or a corresponding official document may be requested from the authors. In manuscripts reporting the results of an experimental study, it must be stated within the main text that all patients were informed in detail on the treatments and that an informed consent was obtained from each patient. For studies carried out on animals, the measures taken to prevent pain and suffering of the animals must be explicitly stated. Information on the patient consent, name of the ethics committee, and the ethics committee approval number must also be stated in the Patients and Methods section of the manuscript. It is the author's responsibility to carefully protect the patients' anonymity. For photographs that may reveal the identity of the patient, signed releases of the patient or of his/her legal representative must be enclosed.

### Plagiarism

Whether intentional or not, plagiarism is a serious violation. We define plagiarism as a case in which a paper reproduces another work with similarity and without citation. If evidence of plagiarism is found before/after acceptance or after publication of the paper, the author will be offered a chance for rebuttal. If the arguments are not found to be satisfactory, the manuscript will be retracted and the author sanctioned from publishing papers for a period to be determined by the responsible Editor(s). The journal uses URKUND plagiarism screening tool to screen all submissions and to verify the originality of content before publication.

### Review Process

Pre-evaluation process of each submission is carried out by the Editorial Board. Manuscripts are scanned for plagiarism or duplication. In case of an ethical issue on plagiarism or duplication, the Editorial Board will act in accordance with the Committee on Publication Ethics (COPE). The manuscripts which pass this stage are assigned to at least two double-blind peer-reviewers with a statistics reviewer. Reviewers are selected among independent experts who has published publications in the international literature on the submission subject and received considerable amount of citations. Research articles, systematic reviews, and meta-analyses are also reviewed by a biostatistician. By submitting a manuscript to the journal, authors accept that editor may implement changes on their manuscripts including misleading statements and mistypings, as long as the main idea of the manuscript is not interfered.

Manuscripts submitted to The Turkish Journal of Physical Medicine and Rehabilitation will go through a double-blind peer-review process. Each submission will be reviewed by at least two external, independent peer reviewers who are experts in their fields to ensure an unbiased evaluation process. The editorial board will invite an external and independent editor to manage the evaluation processes of manuscripts submitted by editors or by the editorial board members of the journal. The Editor-in-Chief is the final authority in the decision-making process for all submissions.

Once a manuscript is accepted for publication, the author list of the manuscript cannot be amended.

All manuscripts must be prepared using the Microsoft Office Word toolbox and must be structured in accordance with the principles mentioned below.

### MANUSCRIPT TYPES

**Original Article:** The abstract should be structured with Objective, Patients and Methods (for human studies)/Materials and Methods (for experimental studies), Results, and Conclusion subheadings and should not be longer than 250 words. Keywords should be concordant with the National Library of Medicine (NLM) Medical Subject Headings (MeSH) vocabulary terms and three to six keywords should be listed. The main text should be structured with Introduction, Patients and Methods (for human studies)/Materials and Methods (for experimental studies), Results (with maximum three subheadings), and Discussion sections and should be limited to 3000 words. The reference list and tables should be located at the end of the main document. All images should be submitted in .JPG and .TIFF formats in 300 Dpi resolutions. Number of cited references should be limited with 40. Tables and illustrations are limited with six.

Statistical analysis must be performed in accordance with the guidelines on reporting statistics in medical journals (Altman DG, Gore SM, Gardner MJ, Pocock SJ. Statistical Guidelines for Contributors To Medical Journals. *Br Med J* 1983;7:1489-93). The software used for the analysis should be explicitly stated. For parametric tests, continuous variables are expressed in mean  $\pm$  standard deviation, while for non-parametric tests, data are expressed in median and range (min-max) or median and interquartile range (25<sup>th</sup> and 75<sup>th</sup> percentiles). When complex analyses are used, the relative risk (RR), odds ratio (OR) and hazard ratio (HR) values are supported by providing confidence intervals (CI) and p values. Units should be prepared in accordance with the International System of Units (SI).

**Editorial:** These are short manuscripts which are prepared by the experts to comment on an article which is published in the current or previous issues of the journal. This type of manuscript is solicited. An Abstract, Keywords, Tables or Figures are not required for the Editorial Comments. The main text should not be structured with subheadings and should not be longer than 1500 words. Number of references should be limited to 15. Only one table or illustration is allowed.

**Review:** Reviews including systematic reviews and meta-analyses which are prepared by authors who have an extensive knowledge on a specific field and whose scientific background has been translated into a high volume of publication with a high citation potential are taken under review. The authors will be invited by the journal. Reviews should be describing, discussing and evaluating the current level of knowledge or topic used in the clinical practice and should guide further studies. The manuscript contains an unstructured abstract not exceeding 150 words.

The manuscript should include three to six keywords which conform to the MeSH terms prepared by the NLM. The main text should contain Introduction, Clinical and Research Consequences, and Conclusion sections. The main text should not exceed 4000 words and the references should be limited to 75. Tables and illustrations are limited with eight.

The originality of the visual media contained in the reviews should be confirmed by submitting a letter to the journal. The original versions of the printed or electronic copies of the images adapted from a published source should be explicitly cited and the written permission obtained from the copyright holder (publisher, journal or authors) should be forwarded to the journal.

**Case Report:** There is a limited space for case reports in the journal and only reports on rare cases or conditions which constitute challenges in the diagnosis and treatment, those offering novel therapeutic approaches or recent knowledge not included in the textbooks, and interesting and educative case reports are accepted for publication. The abstract should be unstructured and should not exceed 80 to 100 words. The manuscript should include three to six keywords which conform to the MeSH terms prepared by the NLM. The main text should include Introduction, Case Report, Discussion, and Conclusion sections. Figures and images should be submitted separately in JPEG or TIFF formats in 300 Dpi resolutions. The main text should be limited to 1500 words. References should be limited to 20. Each case report should include an informed consent from each patient which is explicitly stated in the Case Report section. Tables and illustrations are limited with three in black and white format. Colored illustrations will be paid, if requested.

**Letter to the Editor:** Includes manuscripts discussing important parts, overlooked aspects, or lacking parts of a previously published article. Papers on the subjects within the scope of the journal which may likely to attract the readers' attention, in particular, educative cases are also allowed to be submitted in the form of Letter to the Editor. Readers are also allowed to present their comments on the published manuscripts in the form of Letter to the Editor. Abstract, Keywords, Tables, Figures, Images, and other media are not included. The text should be unstructured and should not exceed 500 words with one to five references. Volume, year, issue, page numbers, and title of the manuscript being commented on, as well as the name of the authors should be explicitly specified, should be listed in the references, and cited within the text. Only one table or illustration is allowed.

#### Tables and Figures

Submitted manuscript files should be blind to ensure a double-blind review process. Information which may indicate an individual or institution should be excluded from the manuscript files.

All Tables, Figures, Graphs, and other visual media should be numbered in the order of citation within the text and must not disclose the names of the patients, doctors or institutions. Tables should be prepared using the Microsoft Office Word toolbox with Insert Table command and be placed at the end of the References

section of the main text. Tables should not be submitted in JPEG, TIFF or other visual formats. In microscopic images, magnification and staining techniques should be specified in addition to the figure captions. All images should be in high-resolution with minimum 300 Dpi resolutions in white and black format. Otherwise, it will be paid. Lines in the graphs should be in separate columns. Therefore, loss of details would be minimal, if reduction is needed during press. The width should be 9 cm or 18 cm. Preferably, the drawings should be prepared by the professionals. Gray color should be avoided. Abbreviations used in tables should be defined in alphabetical order at the bottom of the tables. Roman numerals should be avoided while numbering the Tables and Figures, or while citing the tables in the text. Decimal points in the text, tables and figures, should be separated by dots (p=0.05) and comma (1,000) for at least four digit numbers. Particularly, tables should be explanatory for the text and should not duplicate the data given in the text.

When a drug, product, hardware, or software program is mentioned within the main text, product information, including the name of the product, the producer of the product, and city and the country of the company (including the state if in USA), should be provided in parentheses in the following format: Discovery ST PET/CT scanner (General Electric, Milwaukee, WI, USA).

#### References

References should be numbered in the order they are cited. Only published data or manuscripts accepted for publication and recent data should be included. Inaccessible data sources and those not indexed in any database should be omitted. Titles of journals should be abbreviated in accordance with Index Medicus-NLM Style (Patrias K. Citing medicine: the NLM style guide for authors, editors, and publishers [Internet]. 2nd ed. Wendling DL, technical editor. Bethesda (MD): National Library of Medicine (US); 2007 - [updated 2011 Sep 15; cited Year Month Day] (<http://www.nlm.nih.gov/citingmedicine>). All authors should be listed if an article has six or less authors; if an article has more than six authors, first six authors are listed and the rest is represented by "et al.". Reference format and punctuation should be as in the following examples:

- If the surname of the first author of the referenced article is given, "et al." should be added after it, followed by its reference number within square brackets "[1]"
- Give references in the text using Arabic numerals in brackets "[1]" (superscript preferred).
- If more than one references are required in the main manuscript, references should be stated in a superscript square bracket with a comma at the end of the punctuation mark of the related sentence. [1,2,5]
- If there are more than two consecutive references, the first and the last ones should be given with "-" mark between them: e.g. [1-3]; [8-14]; [14-18].

Abbreviations of journals should conform to those used in Index Medicus. Authors are solely responsible for the accuracy and completeness of references.

**Journal:** Ehde DM, Czerniecki JM, Smith DG, Campbell KM, Edwards WT, Jensen MP, et al. Chronic phantom sensations, phantom pain, residual limb pain, and other regional pain after lower limb amputation. *Arch Phys Med Rehabil* 2000;81:1039-44.

**Book Section:** Eftekhari N. Amputation rehabilitation: In: O'Young B, Young MA, Stiens SA, editors. *PMR Secrets*. Philadelphia: Hanley&Belfus Inc.; 1999. p. 214-22.

**Books with Single Author:** Mulligan BR. *Manual Therapy: Nags, Snags, MWMs*, etc. 6th ed. Wellington: Bateson Publishing Ltd; 2010.

**Editor(s) as author(s):** O'Sullivan SB, Schmitz TJ, editors. *Improving functional outcomes in physical rehabilitation*. 1st ed. Pennsylvania: F.A. Davis Company; 2010.

**Conference Proceedings:** Bengissson S, Sothemin BG. Enforcement of data protection, privacy and security in medical informatics. In: Lun KC, Degoulet P, Piemme TE, Rienhoff O, editors. *MEDINFO 92. Proceedings of the 7th World Congress on Medical Informatics*; 1992 Sept 6-10; Geneva, Switzerland. Amsterdam: North-Holland; 1992. p. 1561-5.

**Scientific or Technical Report:** Smith P, Golladay K. Payment for durable medical equipment billed during skilled nursing facility stays. Final report. Dallas (TX) Dept. of Health and Human Services (US). Office of Evaluation and Inspections: 1994 Oct. Report No: HHSIGOE 169200860.

**Thesis:** Kaplan SI. Post-hospital home health care: the elderly access and utilization (dissertation). St. Louis (MO): Washington Univ.; 1995.

**Epub Ahead of Print Articles:** Baki ME, Aldemir C, Duygun F, Doğan A, Kerimoğlu G. Comparison of non-compression and compression interlocking intramedullary nailing in rabbit femoral shaft osteotomy model. *Eklemler Hastalıkları Cerrahisi* 2017;28:7-12.

**Manuscripts published in electronic format:** Teasell R, Bhogal SK, Foley N. Painful hemiplegic shoulder. Evidence-Based Review of stroke rehabilitation. 2006. Available from: [http://www.scribd.com/doc/6281057/](http://www.scribd.com/doc/6281057/Evidence-Based-Review-of-Stroke-Rehab) Evidence-Based-Review-of-Stroke-Rehab.

## REVISIONS

When submitting a revised version of a paper, the author must submit a detailed "Response to the reviewers" that states point by point how each issue raised by the reviewers has been covered and where it can be found (each reviewer's comment, followed by the author's reply and line numbers where the changes have been made) as well as an annotated copy of the main document. Revised manuscripts must be submitted within 30 days from the date of the decision letter. If the revised version of the manuscript is not submitted within the allocated time, the revision option may be canceled. If the submitting author(s) believe that additional time is required, they should request this extension before the initial 30-day period is over.

Accepted manuscripts are copy-edited for grammar, punctuation, and format. Once the publication process of a manuscript is completed, it is published online on the journal's webpage as an ahead-of-print publication before it is included in its scheduled issue. A PDF proof of the accepted manuscript is sent to the corresponding author and their publication approval is requested within 2 days of their receipt of the proof.

The latest status of the submitted manuscripts and other information about the journal can be accessed at <http://www.turkishjournalpmr.com>. Furthermore, contact details of the Editorial Office and Publisher are provided below for correspondence with the journal in every respect.

**Editors:** Prof. Birkan Sonel Tur, MD., Prof. Deniz Evcik, MD.

**Corresponding:** Türkiye Fiziksel Tıp ve Rehabilitasyon Derneği  
Büyükdere Cad. Arzu Apt. No: 99, Kat: 4, D: 8-9,  
34394 Mecidiyeköy, İstanbul, Turkey.

Tel: +90 212 - 236 90 52 Fax: +90 212 - 236 90 54

E-mail : [info@turkishjournalpmr.com](mailto:info@turkishjournalpmr.com)  
[info@ftrdergisi.com](mailto:info@ftrdergisi.com)

Web page : <http://www.turkishjournalpmr.com>  
<http://www.ftrdergisi.com>