



TURKISH SOCIETY OF PHYSICAL MEDICINE AND REHABILITATION

P-ISSN: 2567-0823 • E-ISSN: 2587-1250

TURKISH JOURNAL OF PHYSICAL MEDICINE AND REHABILITATION

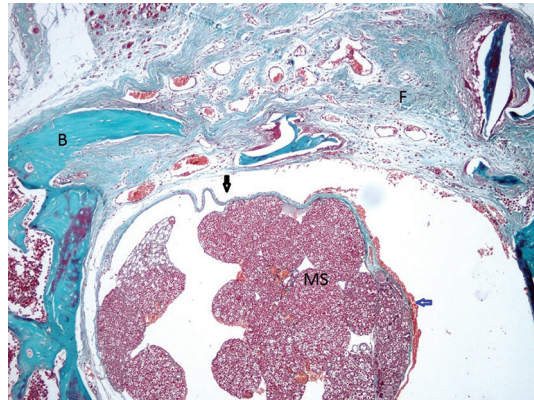
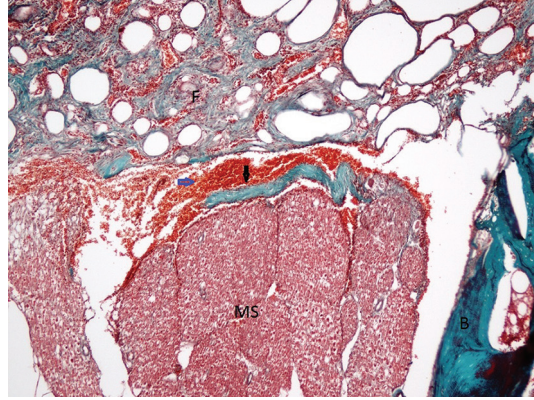
Formerly published as **Türkiye Fiziksel Tıp ve Rehabilitasyon Dergisi**

Editors

Birkan Sonel Tur
Deniz Evcik

Associate Editors

Ayşe Nur Bardak
Burcu Yanık
Duygu Geler Külçü
Şebnem Koldaş Doğan



Indexed in Science
Citation Index-Expanded

Bayınar
Tıbbi Yayıncılık

VOLUME 65 • NUMBER 1 • MARCH 2019

www.turkishjournalpmr.com
www.ftrdergisi.com



TURKISH JOURNAL OF PHYSICAL MEDICINE AND REHABILITATION

Formerly published as **Türkiye Fiziksel Tıp ve Rehabilitasyon Dergisi**

Founders / Kurucular

Osman Cevdet Çubukçu
Derviş Manizade
Aziz Sevüktekin
Akif Şakir Şakar

Türkiye Fiziksel Tıp ve Rehabilitasyon Derneği
Adına Sahibi ve Sorumlu Yazı İşleri Müdürü
Ayşegül Ketenci

Executive Office / Yönetim Yeri ve Adresi

Büyükdere Cad. Arzu Apt. No: 99, Kat: 4, D: 8-9,
34394 Mecidiyeköy, İstanbul, Türkiye.
Tel: +90 212 236 90 52
Fax: +90 212 236 90 54
URL: <http://www.turkishjournalpmr.com>
<http://www.ftrdergisi.com>

Editorial Contact Person / Editöryel İletişim

Birkan Sonel Tur
Deniz Evcik
e-mail / e-posta: info@turkishjournalpmr.com
info@ftrdergisi.com

Publisher / Yayıncı

Baycınar Tıbbi Yayıncılık
Örnek Mah. Dr. Suphi Ezgi Sok., No: 11, D: 6,
34704 Ataşehir, İstanbul, Türkiye
Tel: +90 216 317 41 14
Fax: +90 216 317 63 68
e-mail / e-posta: info@baycınartibbiyayincilik.com

Press / Baskı

Ege Reklam Basım Sanatları San.Tic. Ltd. Şti.
Esatpaşa Mah. Ziyaapaşa Cad. No: 4,
34704 Ataşehir, İstanbul, Türkiye
Tel: +90 216 470 44 70
Fax: +90 216 472 84 05
URL: <http://www.egebasim.com.tr>
Matbaa Sertifikası No: 12468

Press date / Basım tarihi

March 06, 2019 / 06 Mart 2019
Circulation / Baskı adedi: 450

Type of publication / Yayın Türü

Periodical / Yerel Süreli

Owner on Behalf of Turkish Society of Physical Medicine and Rehabilitation and Responsible Manager

Ayşegül Ketenci
İstanbul University, İstanbul, Turkey

Editors

Birkan Sonel Tur
Ankara University, Ankara, Turkey

Deniz Evcik
Güven Hospital, Ankara, Turkey

Associate Editors

Ayşe Nur Bardak
University of Health Sciences, İstanbul, Turkey

Burcu Yanık
Çankaya Hospital, Ankara, Turkey

Duygu Geler Külcü
University of Health Sciences, İstanbul, Turkey

Şebnem Koldaş Doğan
University of Health Sciences, Antalya, Turkey

Statistics Consultants

Afra Alkan
Yıldırım Beyazıt University, Ankara, Turkey

Atilla Halil Elhan
Ankara University, Ankara, Turkey

Elif Çiğdem Altunok
Yeditepe University, İstanbul, Turkey

Halim İşsever
İstanbul University, İstanbul, Turkey

Pervin Demir
Yıldırım Beyazıt University, Ankara, Turkey

Selcen Yüksel
Yıldırım Beyazıt University, Ankara, Turkey

Timur Köse
Ege University, İzmir, Turkey

The Turkish Journal of Physical Medicine and Rehabilitation is indexed by Science Citation Index Expanded, EMBASE, Scopus, CINAHL, Gale/Cengage Learning, EBSCO, Index Copernicus, DOAJ, TUBITAK ULAKBIM TR Index and Türkiye Citation Index.

All rights are reserved. Rights to the use and reproduction, including in the electronic media, of all communications, papers, photographs and illustrations appearing in this journal are the properties of the Turkish Journal of Physical Medicine and Rehabilitation, reproduction without prior written permission of part or all of and material is not permitted. The journal complies with the Professional Principles of the Press.



This publication is printed on paper that meets the international standard ISO 9706: 1994

National Library of Medicine encourages the use of permanent, acid-free paper in the production of biomedical literature.

The control of conformity with the journal standards and the typesetting of the articles in this journal, the control of the abstracts and references and the preparation of the journal for publishing were conducted by Baycınar Medical Publishing.



National Scientific Advisory Board

Arzu On*Ege University, İzmir, Turkey***Aydan Oral***İstanbul University, İstanbul, Turkey***Ayşe Küçükdeveci***Ankara University, Ankara, Turkey***Ayşe Yalman***İstanbul University, İstanbul, Turkey***Ayşegül Ketenci***İstanbul University, İstanbul, Turkey***Banu Kuran***Yeni Yüzyıl University, İstanbul, Turkey***Canan Tıkız***Adnan Menderes University, Aydın, Turkey***Dilşad Sindel***İstanbul University, İstanbul, Turkey***Elif Akalın***Dokuz Eylül University, İzmir, Turkey***Erkan Kozanoğlu***Çukurova University, Adana, Turkey***Füsün Ardıç***Pamukkale University, Denizli, Turkey***Füsün Köseoğlu***TOBB ETU Hospital, Ankara, Turkey***Füsün Şahin***Pamukkale University, Denizli, Turkey***Gülseren Akyüz***Marmara University, İstanbul, Turkey***Hakan Tuna***Trakya University, Edirne, Turkey***Hatice Bodur***Yıldırım Beyazıt University, Ankara, Turkey***Haydar Gök***Ankara University, Ankara, Turkey***İlker Yağcı***Marmara University, İstanbul, Turkey***Jale İrdesel***Uludağ University, Bursa, Turkey***Kenan Akgün***İstanbul University, İstanbul, Turkey***Meltem Vural***University of Health Sciences, İstanbul, Turkey***Murat Zinnuroğlu***Gazi University, Ankara, Turkey***Mustafa Çaliş***Erciyes University, Kayseri, Turkey***Müfit Akyüz***Karabük University, Karabük, Turkey***N. Kutay Ordu Gökkaya***University of Health Sciences, Ankara, Turkey***Nurdan Paker***University of Health Sciences, İstanbul, Turkey***Ömer Faruk Şendur***Adnan Menderes University, Aydın, Turkey***Özlen Peker***Dokuz Eylül University, İzmir, Turkey***Rengin Güzel***Çukurova University, Adana, Turkey***Resa Aydın***İstanbul University, İstanbul, Turkey***Safiye Tuncer***Ankara University, Ankara, Turkey***Sibel Eyigör***Ege University, İzmir, Turkey***Sumru Özel***Hitit University, Çorum, Turkey***Tunç Alp Kalyon***Medicana Hospital, İstanbul, Turkey***Ülkü Zeynep Akarırmak***İstanbul University, İstanbul, Turkey***Yeşim Kirazlı***Ege University, İzmir, Turkey***Zeynep Güven***Acibadem University, İstanbul, Turkey*

International Scientific Advisory Board

Alessandro Giustini*Rehabilitation Unit, Ospedale Sanpancrazio Santostefano Rehabilitation Group, Arco, Trento, Italy***Amparo Martinez Assucena***Hospital of Requena, Valencia, Spain***Carl Chen***Chang Gung Memorial Hospital, Taipei, Taiwan***Chang-II Park***Konyang University, Daejeon, Korea***Elena Ilieva***Plovdiv Medical University, Plovdiv, Bulgaria***Farooq Rathore***Bahria University, Karachi, Pakistan***Fary Khan***Monash University, Melbourne, Australia***Farzaneh Torkan***Shefa Research Center, Tehran, Iran***Francesca Gimigliano***University of Campania "Luigi Vanvitelli", Caserta, Italy***Frederick Frost***Case Western Reserve University, Cleveland, Ohio, USA***Gabor Fazekas***National Institute for Medical Rehabilitation, Budapest, Hungary***Gordana Stefanovsk***Institute of PRM "Dr M. Zotovic", Banja Luka, Bosnia and Herzegovina***Helena Burger***University Rehabilitation Institute, Ljubljana, Slovenia***Iuly Treger***Soroka Medical University, Beer-Sheva, Israel***Jolanta Kujawa***Medical University of Lodz, Lodz, Poland***Jorge Lains***Rehabilitation Centre for the Central region of Portugal, Rovisco Pais Hospital, Tocha, Portugal***Juan Manuel Guzman***Clinica De Rehabilitacion, Mexico City, Mexico***Khalil Al-Abbadi***Arab Center For Physical & Rehabilitation Medicine, Amman, Jordan***Luh K Wahyuni***University of Indonesia, Jakarta, Indonesia***Lydia Abdul Latif***Malaysia University of Malaysia, Kuala Lumpur, Malaysia***Mansoor Rayegani***Shahid Beheshti University, Tehran, Iran***Mark A. Young***Maryland Rehabilitation Center, Baltimore, Maryland, USA***Milica Lazovic***University of Belgrade, Belgrade, Serbia***Nachum Soroker***Tel-Aviv University, Tel Aviv, Israel***Peter Lim Ai Chi***Baylor College of Medicine, Singapore - Houston, Texas, USA***Rajesh Pramanik***IPGMER & SSKM Hospital, Koklata, India***Simon F.T. Tang***Chang Gung University, Taipei, Taiwan***Soumya Chatterjee***Case Western Reserve University, Cleveland, Ohio, USA***Taslim Uddin***BSM Medical University, Dhaka, Bangladesh***Zohra Ben Salah***University Hospital of Monastir, Monastir, Tunisia*



CONTENTS

ORIGINAL ARTICLES

- 1 **Evaluation of the effects of neural therapy in patients diagnosed with fibromyalgia**
Turgay Altınbilek, Rabia Terzi, Aynur Başaran, Sena Tolu, Seher Küçüksaraç
- 9 **Effectiveness of medial-wedge insoles for children with intoeing gait who fall easily**
Hisashi Mouri, Wook-Cheol Kim, Yuji Arai, Takashi Yoshida, Yoshinobu Oka, Kazuya Ikoma, Hiroyoshi Fujiwara, Toshikazu Kubo
- 16 **Effectiveness of electrical stimulation after administration of botulinum toxin in children with spastic diplegic cerebral palsy: A prospective, randomized clinical study**
Pembe Yiğitoğlu, Erkan Kozanoğlu
- 24 **Effect of topical rifamycin application on epidural fibrosis in rats**
Cem Dinç, Cengiz Tuncer, Mehmet Erhan Türkoğlu, Mehmet Tokmak, Pınar Ocak, Uygur Er
- 30 **Effects of physical therapy agents on pain, disability, quality of life, and lumbar paravertebral muscle stiffness via elastography in patients with chronic low back pain**
Ozan Volkan Yurdakul, Engin Beydoğan, Ebru Yılmaz Yalçınkaya
- 40 **The effect of shear-wave elastography on functional results and muscle stiffness in patients undergoing non-selective and selective open kinetic chain exercises**
Hüseyin Botanlioğlu, Gökhan Zengin, Olgar Birsell, Önder Aydıngöz, Mehmet Fatih Güven, Rufat Erginer, Gökhan Kaynak, Fethi Ustaşoğlu, Fatih Gülşen
- 51 **Impulsivity and ankylosing spondylitis: Is there a relationship?**
Fatma Gül Yurdakul, Yeşim Garip Çimen, Rezan Koçak Ulucaköy, Şahide Eda Almaz, Aslı Çalışkan Uçkun, Hatice Bodur
- 59 **Translation, reliability, and validity of the Turkish version of the Neck Bournemouth Questionnaire**
Onur Yılmaz, Ümit Gafuroğlu, Selcen Yüksel
- 67 **Factors affecting functional outcome in patients with traumatic brain injury sequelae: Our single-center experiences on brain injury rehabilitation**
Yasin Demir, Özlem Köroğlu, Elif Tekin, Emre Adıgüzel, Serdar Kesikburun, Ümüt Güzelkücüçük, Bilge Yılmaz, Rıdvan Alaca, Evren Yaşar
- 74 **Posturographic examination of body balance in patients with Chiari type I malformation and correlation with the presence of syringomyelia and degree of cerebellar ectopia**
Deniz Palamar, Hüseyin Güler, Murat Hancı, Hamza Sucuoğlu, Galip Zihni Sanus, Şansın Tüzün

CASE REPORTS

- 80 **A rare and late presentation of pudendal neuralgia in a patient with fibromyalgia after pilates exercises**
Mustafa Aziz Yıldırım, Gökşen Gökşenoğlu
- 84 **Sacroiliitis and sacral insufficiency fracture: A rare coexistence**
Meltem Vural, Işıl Üstün, Ercan İnci, Cemal Bes
- 87 **Acute bilateral foot drop in a chronic alcoholic patient**
Zeynep Tuba Bahtiyar, Özgür Zeliha Karaahmet, Mehlika Panpallı Ateş, Zeynep Kırac Ünal, Fatma Aytül Çakıcı

REVIEW

- 93 **The clinical aspects and effectiveness of suit therapies for cerebral palsy: A systematic review**
Evrin Karadağ-Saygı, Esra Giray

Instructions for Authors

The Turkish Journal of Physical Medicine and Rehabilitation, formerly published as Türkiye Fiziksel Tıp ve Rehabilitasyon Dergisi, is the official publication of the Turkish Society of Physical Medicine and Rehabilitation which covers specific subjects on physical medicine and rehabilitation. The journal is an international open-access, double-blind peer-reviewed periodical journal bringing the latest developments in physical medicine and rehabilitation. The journal publishes original articles, review articles, editorials, case reports (limited), letters to the editors. The language of the journal is English and it is published quarterly (in March, June, September, and December).

Manuscripts can only be submitted through the online manuscript submission and evaluation system of the journal, available at <http://www.turkishjournalpmr.com> or <http://www.ftrdergisi.com>. Manuscripts submitted via any other medium will not be evaluated.

The editorial and publication processes of the journal are conducted in accordance with the guidelines of the International Council of Medical Journal Editors (ICMJE), the World Association of Medical Editors (WAME), the Council of Science Editors (CSE), the Committee on Publication Ethics (COPE), the European Association of Science Editors (EASE), and National Information Standards Organization (NISO). The journal conforms to the Principles of Transparency and Best Practice in Scholarly Publishing (doaj.org/bestpractice).

An ORCID ID is required for all authors during the submission of the manuscript. The ID is available at <http://orcid.org> with free of charge.

Manuscripts submitted for the evaluation should not be previously presented or published elsewhere in any medium (paper or electronic). Editorial board should be informed of manuscripts which have been already submitted to another journal for the evaluation and rejected for publication. Manuscripts which have been presented in a meeting should be submitted with detailed information on the name, date, and venue of the organization. The originality of the content, high scientific merit and citation potential are the prime considerations of the editors.

Statements or opinions expressed in the published content only reflect the views of the author(s), but not the opinions of the editors. The Turkish Society of Physical Medicine and Rehabilitation, the Editorial Board, and the publisher disclaim any scientific, ethical or legal responsibility or liability for such materials. The author is solely responsible for the manuscript, Tables, Figures, and etc. which may elicit financial and legal responsibilities.

Upon the submission of the manuscript with the signed Copyright Transfer Agreement Form, the authors transfer all copyrights of their manuscripts within the scope of local and international laws to the journal. For this purpose, a copyright transfer form must be signed by all contributing authors and the original signed form must be posted to the Editorial office.

The Authorship Contribution Form must be filled by the corresponding author and a signed and scanned version must be submitted during the submission process to act appropriately to the authorship rights and prevent ghost or honorary authorship. The Authorship Contribution Form and the Printing Approval Form which are both released by the publisher must be submitted.

Conflict of Interest Statement

Any financial grants or other support received for the study from individuals or institutions must be disclosed to the Editorial Board and the International Committee of Medical Journal Editors (ICMJE) Potential Conflict of Interest Disclosure Form must be filled and submitted to disclose potential conflicts of interest.

The manuscripts must be prepared in accordance with ICMJE Recommendations for the Conduct, Reporting, Editing and Publication of Scholarly Work in Medical Journals (updated in December 2014 - <http://www.icmje.org/icmjerecommendations.pdf>). Authors are required to prepare manuscripts in accordance with the CONSORT guidelines for randomized research studies, the STROBE guidelines for the observational original research studies, the STARD guidelines for the diagnostic accuracy studies, the PRISMA guidelines for systematic reviews and meta-analyses, the ARRIVE guidelines for the experimental animal studies, and the TREND guidelines for non-randomized public behaviors.

Ethical Considerations

An approval of research protocols by the Ethics Committee in accordance with international agreements (Helsinki Declaration, revised 2013, Guide for the Care and Use of Laboratory Animals - <https://www.nap.edu/catalog/5140.html/>) is required for experimental, clinical, and investigational drug studies, and some case reports. If required, the ethics committee reports or a corresponding official document may be requested from the authors. In manuscripts reporting the results of an experimental study, it must be stated within the main text that all patients were informed in detail on the treatments and that an informed consent was obtained from each patient. For studies carried out on animals, the measures taken to prevent pain and suffering of the animals must be explicitly stated. Information on the patient consent, name of the ethics committee, and the ethics committee approval number must also be stated in the Patients and Methods section of the manuscript. It is the author's responsibility to carefully protect the patients' anonymity. For photographs that may reveal the identity of the patient, signed releases of the patient or of his/her legal representative must be enclosed.

Plagiarism

Whether intentional or not, plagiarism is a serious violation. We define plagiarism as a case in which a paper reproduces another work with similarity and without citation. If evidence of plagiarism is found before/after acceptance or after publication of the paper, the author will be offered a chance for rebuttal. If the arguments are not found to be satisfactory, the manuscript will be retracted and the author sanctioned from publishing papers for a period to be determined by the responsible Editor(s). The journal uses URKUND plagiarism screening tool to screen all submissions and to verify the originality of content before publication.

Review Process

Pre-evaluation process of each submission is carried out by the Editorial Board. Manuscripts are scanned for plagiarism or duplication. In case of an ethical issue on plagiarism or duplication, the Editorial Board will act in accordance with the Committee on Publication Ethics (COPE). The manuscripts which pass this stage are assigned to at least two double-blind peer-reviewers with a statistics reviewer. Reviewers are selected among independent experts who have published publications in the international literature on the submission subject and received considerable amount of citations. Research articles, systematic reviews, and meta-analyses are also reviewed by a biostatistician. By submitting a manuscript to the journal, authors accept that editor may implement changes on their manuscripts including misleading statements and mistypings, as long as the main idea of the manuscript is not interfered.

Manuscripts submitted to The Turkish Journal of Physical Medicine and Rehabilitation will go through a double-blind peer-review process. Each submission will be reviewed by at least two external, independent peer reviewers who are experts in their fields to ensure an unbiased evaluation process. The editorial board will invite an external and independent editor to manage the evaluation processes of manuscripts submitted by editors or by the editorial board members of the journal. The Editor-in-Chief is the final authority in the decision-making process for all submissions.

Once a manuscript is accepted for publication, the author list of the manuscript cannot be amended.

All manuscripts must be prepared using the Microsoft Office Word toolbox and must be structured in accordance with the principles mentioned below.

MANUSCRIPT TYPES

Original Article: The abstract should be structured with Objective, Patients and Methods (for human studies)/Materials and Methods (for experimental studies), Results, and Conclusion subheadings and should not be longer than 250 words. Keywords should be concordant with the National Library of Medicine (NLM) Medical Subject Headings (MeSH) vocabulary terms and three to six keywords should be listed. The main text should be structured with Introduction, Patients and Methods (for human studies)/Materials and Methods (for experimental studies), Results (with maximum three subheadings), and Discussion sections and should be limited to 3000 words. The reference list and tables should be located at the end of the main document. All images should be submitted in .JPG and .TIFF formats in 300 Dpi resolutions. Number of cited references should be limited with 40. Tables and illustrations are limited with six.

Statistical analysis must be performed in accordance with the guidelines on reporting statistics in medical journals (Altman DG, Gore SM, Gardner MJ, Pocock SJ. Statistical Guidelines for Contributors To Medical Journals. *Br Med J* 1983;7:1489-93). The software used for the analysis should be explicitly stated. For parametric tests, continuous variables are expressed in mean \pm standard deviation, while for non-parametric tests, data are expressed in median and range (min-max) or median and interquartile range (25th and 75th percentiles). When complex analyses are used, the relative risk (RR), odds ratio (OR) and hazard ratio (HR) values are supported by providing confidence intervals (CI) and p values. Units should be prepared in accordance with the International System of Units (SI).

Editorial: These are short manuscripts which are prepared by the experts to comment on an article which is published in the current or previous issues of the journal. This type of manuscript is solicited. An Abstract, Keywords, Tables or Figures are not required for the Editorial Comments. The main text should not be structured with subheadings and should not be longer than 1500 words. Number of references should be limited to 15. Only one table or illustration is allowed.

Review: Reviews including systematic reviews and meta-analyses which are prepared by authors who have an extensive knowledge on a specific field and whose scientific background has been translated into a high volume of publication with a high citation potential are taken under review. The authors will be invited by the journal. Reviews should be describing, discussing and evaluating the current level of knowledge or topic used in the clinical practice and should guide further studies. The manuscript contains an unstructured abstract not exceeding 150 words.

The manuscript should include three to six keywords which conform to the MeSH terms prepared by the NLM. The main text should contain Introduction, Clinical and Research Consequences, and Conclusion sections. The main text should not exceed 4000 words and the references should be limited to 75. Tables and illustrations are limited with eight.

The originality of the visual media contained in the reviews should be confirmed by submitting a letter to the journal. The original versions of the printed or electronic copies of the images adapted from a published source should be explicitly cited and the written permission obtained from the copyright holder (publisher, journal or authors) should be forwarded to the journal.

Case Report: There is a limited space for case reports in the journal and only reports on rare cases or conditions which constitute challenges in the diagnosis and treatment, those offering novel therapeutic approaches or recent knowledge not included in the textbooks, and interesting and educative case reports are accepted for publication. The abstract should be unstructured and should not exceed 80 to 100 words. The manuscript should include three to six keywords which conform to the MeSH terms prepared by the NLM. The main text should include Introduction, Case Report, Discussion, and Conclusion sections. Figures and images should be submitted separately in JPEG or TIFF formats in 300 Dpi resolutions. The main text should be limited to 1500 words. References should be limited to 20. Each case report should include an informed consent from each patient which is explicitly stated in the Case Report section. Tables and illustrations are limited with three in black and white format. Colored illustrations will be paid, if requested.

Letter to the Editor: Includes manuscripts discussing important parts, overlooked aspects, or lacking parts of a previously published article. Papers on the subjects within the scope of the journal which may likely to attract the readers' attention, in particular, educative cases are also allowed to be submitted in the form of Letter to the Editor. Readers are also allowed to present their comments on the published manuscripts in the form of Letter to the Editor. Abstract, Keywords, Tables, Figures, Images, and other media are not included. The text should be unstructured and should not exceed 500 words with one to five references. Volume, year, issue, page numbers, and title of the manuscript being commented on, as well as the name of the authors should be explicitly specified, should be listed in the references, and cited within the text. Only one table or illustration is allowed.

Tables and Figures

Submitted manuscript files should be blind to ensure a double-blind review process. Information which may indicate an individual or institution should be excluded from the manuscript files.

All Tables, Figures, Graphs, and other visual media should be numbered in the order of citation within the text and must not disclose the names of the patients, doctors or institutions. Tables should be prepared using the Microsoft Office Word toolbox with Insert Table command and be placed at the end of the References

section of the main text. Tables should not be submitted in JPEG, TIFF or other visual formats. In microscopic images, magnification and staining techniques should be specified in addition to the figure captions. All images should be in high-resolution with minimum 300 Dpi resolutions in white and black format. Otherwise, it will be paid. Lines in the graphs should be in separate columns. Therefore, loss of details would be minimal, if reduction is needed during press. The width should be 9 cm or 18 cm. Preferably, the drawings should be prepared by the professionals. Gray color should be avoided. Abbreviations used in tables should be defined in alphabetical order at the bottom of the tables. Roman numerals should be avoided while numbering the Tables and Figures, or while citing the tables in the text. Decimal points in the text, tables and figures, should be separated by dots ($p=0.05$) and comma (1,000) for at least fourdigit numbers. Particularly, tables should be explanatory for the text and should not duplicate the data given in the text.

When a drug, product, hardware, or software program is mentioned within the main text, product information, including the name of the product, the producer of the product, and city and the country of the company (including the state if in USA), should be provided in parentheses in the following format: Discovery ST PET/CT scanner (General Electric, Milwaukee, WI, USA).

References

References should be numbered in the order they are cited. Only published data or manuscripts accepted for publication and recent data should be included. Inaccessible data sources and those not indexed in any database should be omitted. Titles of journals should be abbreviated in accordance with Index Medicus-NLM Style (Patrias K. Citing medicine: the NLM style guide for authors, editors, and publishers [Internet]. 2nd ed. Wendling DL, technical editor. Bethesda (MD): National Library of Medicine (US); 2007 - [updated 2011 Sep 15; cited Year Month Day] (<http://www.nlm.nih.gov/citingmedicine>). All authors should be listed if an article has six or less authors; if an article has more than six authors, first six authors are listed and the rest is represented by "et al.". Reference format and punctuation should be as in the following examples:

- If the surname of the first author of the referenced article is given, "et al." should be added after it, followed by its reference number within square brackets "[1]"
- Give references in the text using Arabic numerals in brackets "[1]" (superscript preferred).
- If more than one references are required in the main manuscript, references should be stated in a superscript square bracket with a comma at the end of the punctuation mark of the related sentence. [1,2,5]
- If there are more than two consecutive references, the first and the last ones should be given with "-" mark between them: e.g. [1-3]; [8-14]; [14-18].

Abbreviations of journals should conform to those used in Index Medicus. Authors are solely responsible for the accuracy and completeness of references.

Journal: Ehde DM, Czerniecki JM, Smith DG, Campbell KM, Edwards WT, Jensen MP, et al. Chronic phantom sensations, phantom pain, residual limb pain, and other regional pain after lower limb amputation. *Arch Phys Med Rehabil* 2000;81:1039-44.

Book Section: Eftekhari N. Amputation rehabilitation: In: O'Young B, Young MA, Stiens SA, editors. *PMR Secrets*. Philadelphia: Hanley&Belfus Inc.; 1999. p. 214-22.

Books with Single Author: Mulligan BR. *Manual Therapy: Nags, Snags, MWMs*, etc. 6th ed. Wellington: Bateson Publishing Ltd; 2010.

Editor(s) as author(s): O'Sullivan SB, Schmitz TJ, editors. *Improving functional outcomes in physical rehabilitation*. 1st ed. Pennsylvania: F.A. Davis Company; 2010.

Conference Proceedings: Bengisson S, Sothemin BG. Enforcement of data protection, privacy and security in medical informatics. In: Lun KC, Degoulet P, Piemme TE, Rienhoff O, editors. *MEDINFO 92. Proceedings of the 7th World Congress on Medical Informatics*; 1992 Sept 6-10; Geneva, Switzerland. Amsterdam: North-Holland; 1992. p. 1561-5.

Scientific or Technical Report: Smith P, Golladay K. Payment for durable medical equipment billed during skilled nursing facility stays. Final report. Dallas (TX) Dept. of Health and Human Services (US). Office of Evaluation and Inspections: 1994 Oct. Report No: HHSIGOE 169200860.



TURKISH SOCIETY OF PHYSICAL MEDICINE AND REHABILITATION

Turkish Journal of Physical Medicine and Rehabilitation

Formerly published as TÜRKİYE FİZİKSEL TIP VE REHABİLİTASYON DERGİSİ

Thesis: Kaplan SI. Post-hospital home health care: the elderly access and utilization (dissertation). St. Louis (MO): Washington Univ.; 1995.

Epub Ahead of Print Articles: Baki ME, Aldemir C, Duygun F, Doğan A, Kerimoğlu G. Comparison of non-compression and compression interlocking intramedullary nailing in rabbit femoral shaft osteotomy model. *Eklem Hastalik Cerrahisi* 2017;28:7-12.

Manuscripts published in electronic format: Teasell R, Bhogal SK, Foley N. Painful hemiplegic shoulder. Evidence-Based Review of stroke rehabilitation. 2006. Available from: [http://www.scribd.com/doc/6281057/](http://www.scribd.com/doc/6281057/Evidence-Based-Review-of-Stroke-Rehab) Evidence-Based-Review-of-Stroke-Rehab.

REVISIONS

When submitting a revised version of a paper, the author must submit a detailed "Response to the reviewers" that states point by point how each issue raised by the reviewers has been covered and where it can be found (each reviewer's comment, followed by the author's reply and line numbers where the changes have been made) as well as an annotated copy of the main document. Revised manuscripts must be submitted within 30 days from the date of the decision letter. If the revised version of the manuscript is not submitted within the allocated time, the revision option may be canceled. If the submitting author(s) believe that additional time is required, they should request this extension before the initial 30-day period is over.

Accepted manuscripts are copy-edited for grammar, punctuation, and format. Once the publication process of a manuscript is completed, it is published online on the journal's webpage as an ahead-of-print publication before it is included in its scheduled issue. A PDF proof of the accepted manuscript is sent to the corresponding author and their publication approval is requested within 2 days of their receipt of the proof.

The latest status of the submitted manuscripts and other information about the journal can be accessed at <http://www.turkishjournalpmr.com>. Furthermore, contact details of the Editorial Office and Publisher are provided below for correspondence with the journal in every respect.

Editors: Prof. Birkan Sonel Tur, MD., Prof. Deniz Evcik, MD.

Corresponding: Türkiye Fiziksel Tıp ve Rehabilitasyon Derneği
Büyükdere Cad. Arzu Apt. No: 99, Kat: 4, D: 8-9,
34394 Mecidiyeköy, İstanbul, Turkey.

Tel: +90 212 - 236 90 52 Fax: +90 212 - 236 90 54

E-mail : info@turkishjournalpmr.com
info@ftrdergisi.com

Web page : <http://www.turkishjournalpmr.com>
<http://www.ftrdergisi.com>



We would like to express our gratitude to our distinguished advisors who contribute to the Journal in 2018

- Afitap İçağasıoğlu
Afra Alkan
Ahmet Özgül
Ajda Bal
Akın Erdal
Ali Murat Zergeroğlu
Aliye Yıldırım Güzelat
Alp Çetin
Altınay Göksel Karatepe
Arzu On
Atilla Halil Elhan
Ayhan Kamanlı
Ayşe A. Küçükdeveci
Ayşe Dicle Turhanoglu
Ayşe Karan
Ayşe Nur Bardak
Ayşe Yalman
Ayşegül Ketenci
Aysun Genç
Aytül Çakıcı
Bahtiyar Demiralp
Banu Sarıfakıoğlu
Barın Selçuk
Berna Çelik
Berrin Gündüz
Beyza Doğanay Erdoğan
Birkan Sonel Tur
Bülent Ülkar
Burcu Duyur Çakıt
Burcu Yanık
Canan Çelik
Canan Tıkız
Çiğdem Bircan
Coşkun Zateri
Demirhan Dıraçoğlu
Deniz Dülgeroğlu Erdoğan
Deniz Evcik
Deniz Palamar
Derya Demirbağ Kabayel
Dilek Durmuş
Dilek Keskin
Dilşad Sindel
Duygu Geler Külcü
Ebru Umay
Ebru Yılmaz Yalçınkaya
Ece Kaptanoğlu
Elif Aydın
Elif Cigdem Altunok
Erkan Kozanoğlu
Erkan Mesci
Evrım Karadağ Saygı
Fatmanur Aybala Koçak
FeYZa Ünlü Özkan
Fikriye Figen Ayhan
Filiz Tuna
Funda Atamaz ÇalıŞ
Funda Taşçıoğlu Berkan
Füsün Ardıç
Füsün Köseoğlu
Füsün Şahin
Gamze Alaylı
Gülcan Gürer
Gülin Fındıkoğlu
Gülseren Akyüz
Gülseren Kayalar
Gülümser Aydın
Hakan Atalar
Hakan Genç
Hakan Tuna
Hale Karapolat
Halim İşsever
Hatice Bodur
Haydar Gök
Hülya Şirzai
Hürriyet Yılmaz
İlhan Karacan
İlker Yağcı
İlknur Aktaş
Jale İrdesel
Jülide Öncü Alptekin
Kadriye Kuran
Kadriye Öneş
Kamil Yazıcıoğlu
Kerem Alptekin
Kıymet İkbal Karadavut
Konçuy Sivrioğlu
Lale Cerrahoğlu
Levent Özçakar
Mehmet Ali Taşkaynatan
Mehmet Beyazova
Mehmet Hancı
Mehmet Yorubulut
Melek Güneş Yavuzer
Melek Sezgin
Meliha Kasapoğlu Aksoy
Meltem Vural
Mine Karagülle
Müfit Akyüz
Murat Ersöz
Murat Sümer
Nalan Çapan
Nazan Canbulat
Necmettin Yıldız
Neşe Özgirgin
Nilay Şahin
Nilgün Şimşir Atalay
Nilüfer Kutay Ordu Gökkyaya
Nurdan Paker
Ömer Faruk Şendür
Özden Özyemişçi Taşkıran
Özlem El
Pelın Yıldırım
Pervin Demir
Peyman Yalçın
Pınar Borman
Rengin Güzel
Resa Aydın
Safiye Tuncer
Saime Ay
Şebnem Koldaş Doğan
Şehim Kutlay
Selcen Yüksel
Selda Sarıkaya
Sema Hatice Öncel
Serap Tomruk Sütbeyaz
Serpil Savaş
Sibel Çubukçu
Sibel Eyiğör
Sibel Ünsal delialioğlu
Simin Hepgüler
Sumru Özel
Teslime Atlı
Timur Köse
Tiraje Tuncer
Toraman Füsün
Tuba Ümit Gafuroğlu
Tuğçe Özekli Mısırhoğlu
Tunay Sarpel
Tunç Alp Kalyon
Turgay Altınbilek
Ülkü Zeynep Akarırmak
Yaprak Ataker
Yasemin Turan
Yasemin Ulus
Yeşim Akkoç
Yeşim Akyol
Zafer Günendi
Zeliha Ünlü
Zeynep Rezan Yorgancıoğlu